



# NS2022

ACCELERATING INNOVATION

BUSINESS

TUES, APRIL 5 • CCC

2:00 PM - 3:00 PM  
ROOM E217

MEGA CUSTOMERS  
MEGA PROJECTS  
MEGA SOLUTIONS

**NS2022**  
ACCELERATING INNOVATION



# Speakers



Brian Oswald-  
CBRE/ESI

# Speakers



Pete Chicarelli- Albireo  
Energy

# Moderator



Vinny Fonti- Tridium

# Question #1

*Tell us a little bit  
about your Mega  
Project.*



## Question #2

*How do you plan for such a large Niagara project?*



## Question #3

*What were some of the advantages of using Niagara in your project?*





## Question #4

*What are some best practices to consider when deploying Niagara in a Mega Project?*



# Question #5

*What, if any, complications arose and what lessons were learned?*



## Question #6

*How do you ensure customer satisfaction with such a large deployment?*

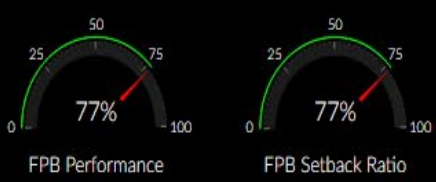


HVAC Lighting Electrical

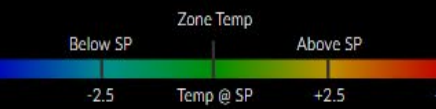
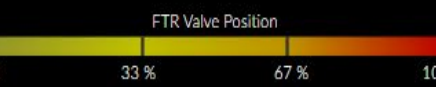
HY\_FPB\_18\_48 / Conf Room / 18A04 / RISER 01

Search Room:

+ Floor Details



Setback Use Case Savings  
**\$ 95 / day**   **\$ 34666 / year**





**WARNERMEDIA**

30 Hudson Yards, New York NY



Critical : 0  
General : 0  
Warning : 0



18th Floor



Apr · 28 · 2020 / 12:43 PM  
59 °F · 32 %RH · 28.9 °Fwb  
Fair

HVAC Lighting Electrical

HY\_FP8\_18\_31 / Open Mtg & Collab / 18-01

Search Room:

Floor Details

Room Number

Temperatures

CO2

Airflow Deviation from Setpt

Zone °F Deviation from Setpt

Thermostats

Occupancy

Main Trunk

Fan Power Box

FDD Events this Week

Fresh Air Rate (CFM/SP)

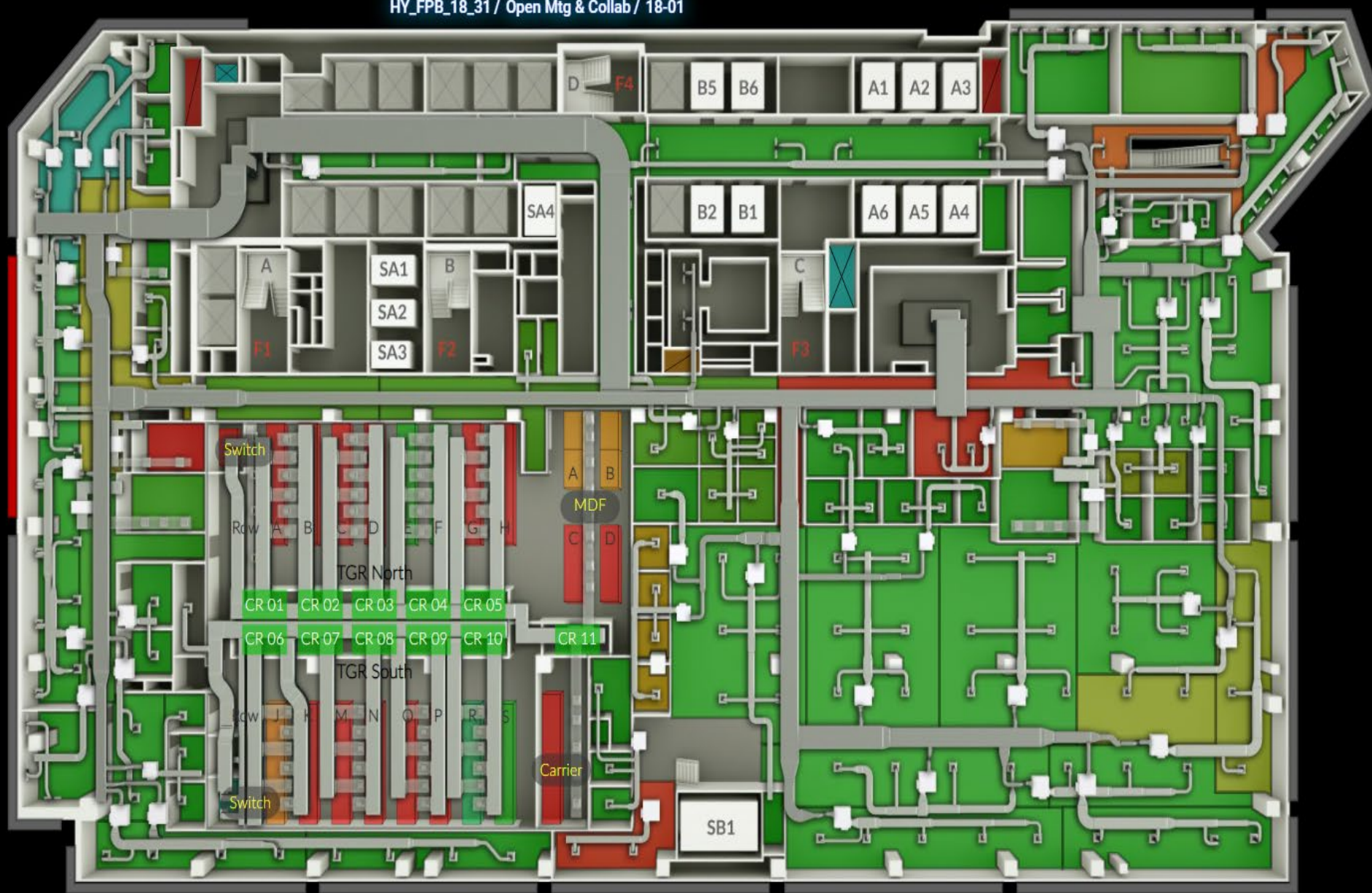
FCU & CRAH

Exhaust Fan

Hide Callouts

FPB Performance

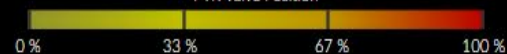
FPB Setback Ratio



Setback Use Case Savings

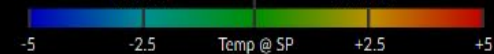
\$ 95 / day \$ 34666 / year

FTR Valve Position



Zone Temp

Below SP Above SP





WARNERMEDIA

30 Hudson Yards, New York NY



Critical : 0  
General : 2  
Warning : 0



18th Floor



Apr · 28 · 2020 / 04:02 PM  
65 °F · 21 %RH · 24.1 °F wb  
Fair



TGR

+ North Pre-Action

Piping

Ductwork

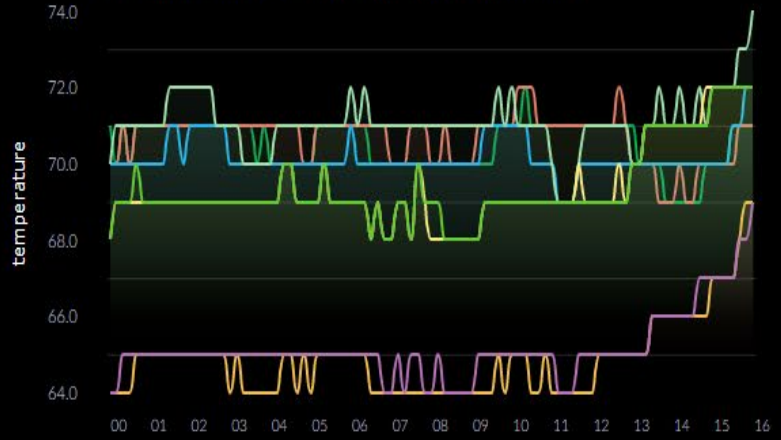


• OFF

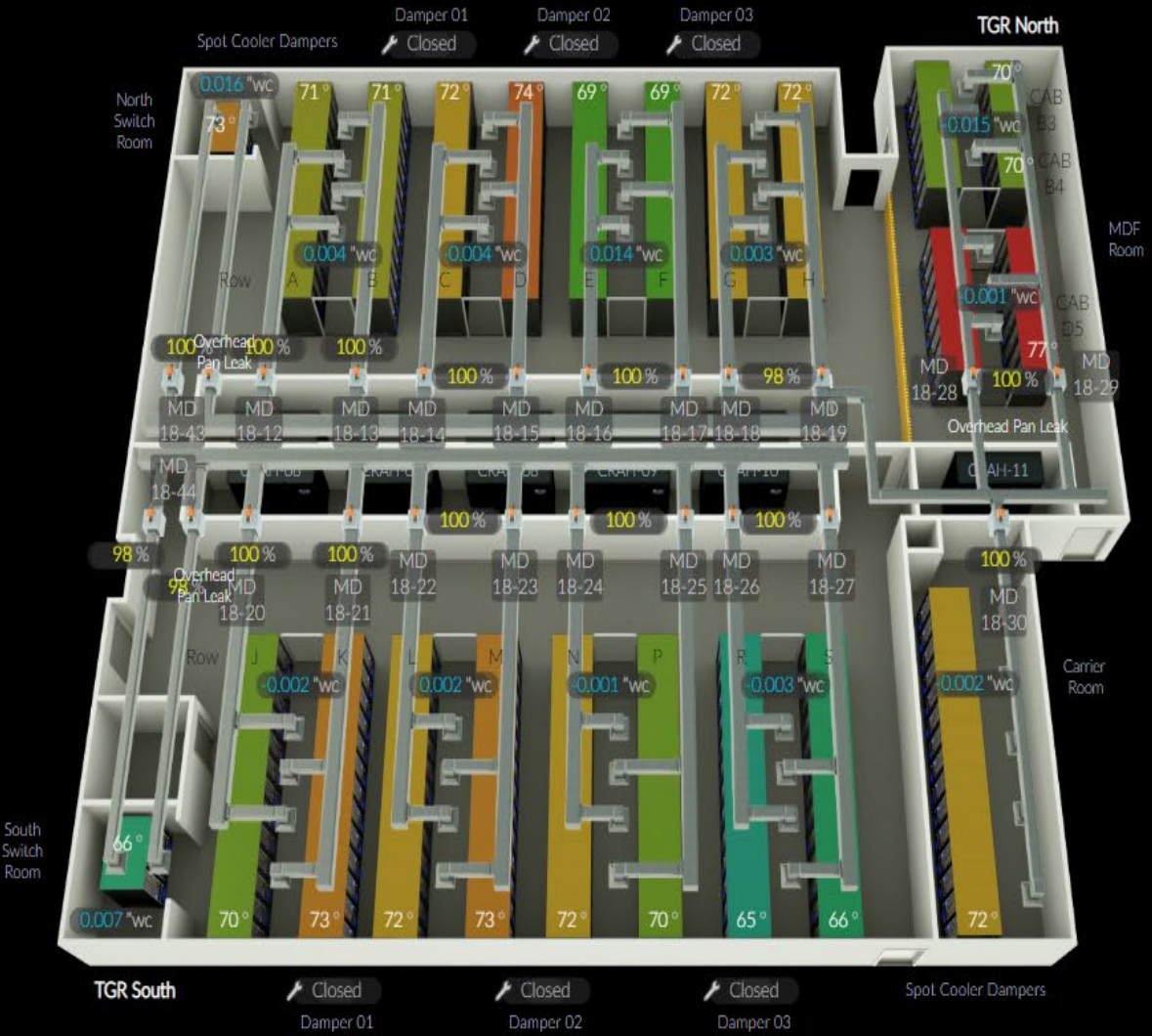
• ON

+ North Racks

ALL Row A Row B Row C Row D Row E Row F Row G Row H



ALL Row A - B Row C - D Row E - F Row G - H



Alarms  
VESDA



+ South Pre-Action



TGR

+ North Pre-Action

Piping

Ductwork

+ TGR Gauges



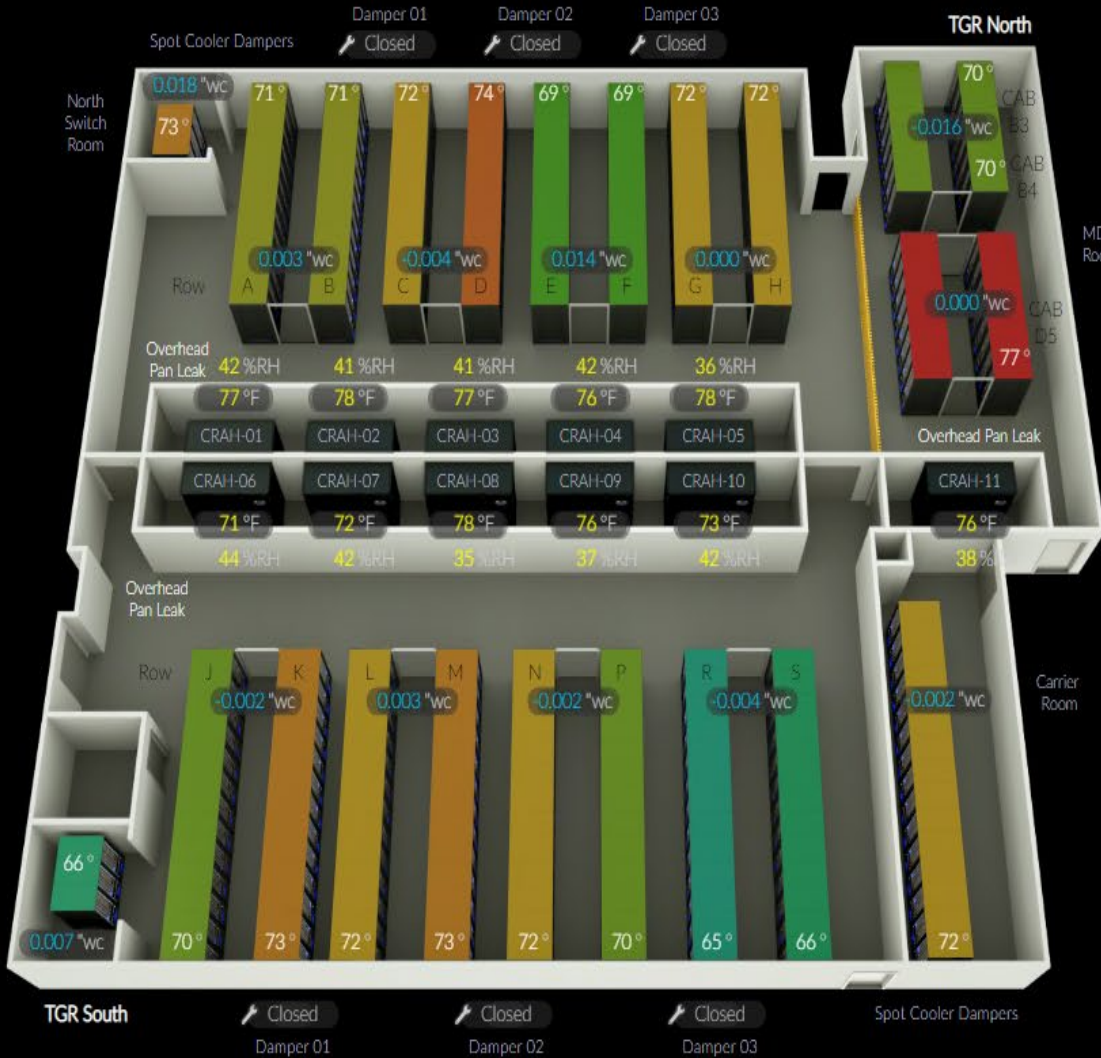
• OFF



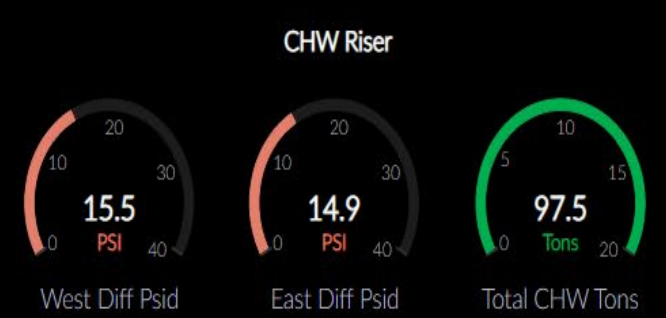
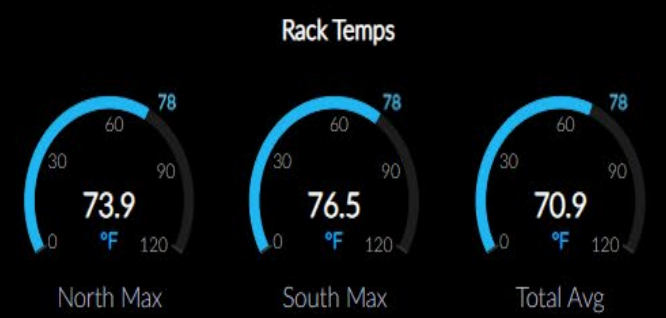
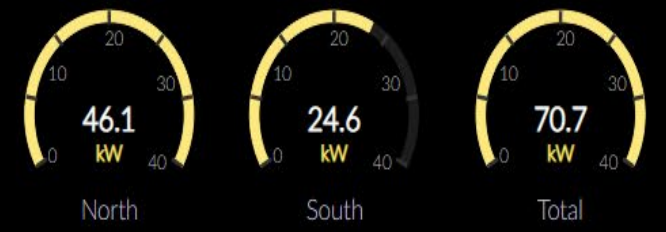
• OFF



Alarms  
VESDA



+ South Pre-Action





**WARNERMEDIA**

30 Hudson Yards, New York NY



Critical : 0

General : 2

Warning : 0



18th Floor



Apr · 28 · 2020 / 04:15 PM

65°F · 21%RH · 24.1°F wb

Fair

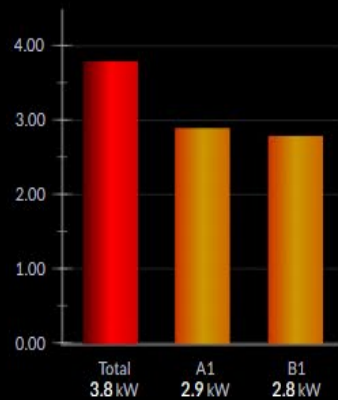
HVAC

Lighting

Electrical

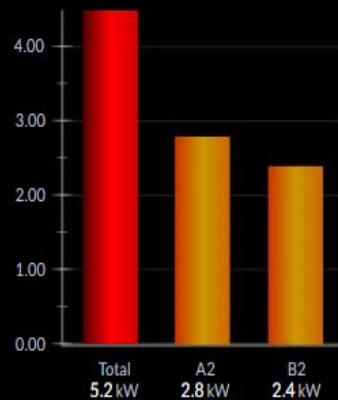
+ UPS Power

West A1 - B1



Delta A1 - B1 1.8 kW

East A2 - B2



Delta A2 - B2 0.4 kW

7.0kW

Total UPS Load







**WARNERMEDIA**

30 Hudson Yards, New York NY



Critical : 0  
General : 2  
Warning : 0



18th Floor



Apr · 28 · 2020 / 03:49 PM  
65 °F · 21 %RH · 24.1 °F wb  
Fair



HVAC    Lighting    Electrical

Search Room:

+ Floor Details

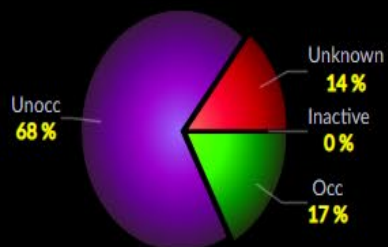


Weekly Avg Power (kW)



Weekly Avg Density (Watts/SqFt)

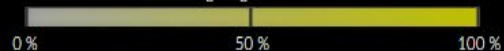
Zone Status



Zone Failures

Total Lamp Failure 1  
Devices Not Responding 5  
Wireless Device Failures 6  
Lamps Near End of Life 0

Lighting Gradient



HY\_LCP\_West\_Open\_18 / Work Benches / TBD

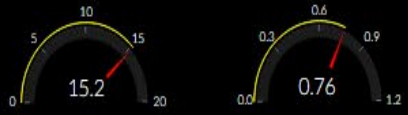


HVAC    Lighting    Electrical

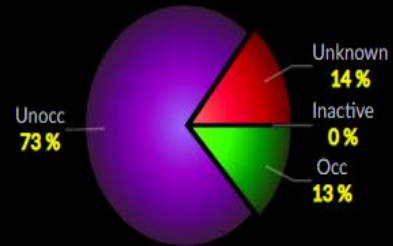
HY\_LCP\_Corr\_18W / Corridor 18W / 18W

Search Room:

+ Floor Details



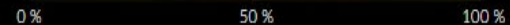
Zone Status



Zone Failures

- Total Lamp Failure: 1
- Devices Not Responding: 5
- Wireless Device Failures: 6
- Lamps Near End of Life: 0

Lighting Gradient



HY\_LCP\_Corr\_18W    Corridor 18W    18W    Status: ok X

<p>Occupancy State: <span style="color: green; font-weight: bold;">Occupied</span></p> <p>Loadshed Goal: <span style="color: green; font-weight: bold;">75.0 %</span>    87.8</p> <p>Loadshed Allowed: <span style="color: gray; font-weight: bold;">No</span>    71.1</p> <p>Lamp Failures: <span style="color: red; font-weight: bold;">1</span>    54.5</p> <p>Devices Not Responding: <span style="color: red; font-weight: bold;">5</span>    37.8</p> <p>Wireless Device Failures: <span style="color: red; font-weight: bold;">6</span>    21.1</p> <p>Lamps Nearing End of Life: <span style="color: green; font-weight: bold;">0</span>    4.5</p>	<p>Lighting Level</p>	<p>Lighting Level</p>	<p>Current Savings by Loadshedding</p>
<p>Savings</p>	<p>Capacity</p>	<p>Lighting Capacity</p>	<p>Current Load</p>

# Audience Q&A



Thank You!

