

# Environmental. Social. Governance.

*These Three Words Combine to Form a Powerful Concept that is Buzzing Through the Built Environment.*





***“Adoption of smart buildings technology is at an inflection point driven by connectivity, data, edge, cloud, and operational and workplace outcomes coming together.”***

***“The industry is currently being influenced by several forces creating this inflection point. Flexible workplaces and demand for IAQ monitoring, the increasing number of connected devices and systems, cyber threats, and the global drive toward net-zero all depend upon buildings being connected and smarter. In addition, this is encapsulated by the ESG movement where organizations are being compelled to be more conscious and demonstrate how they are addressing various environmental & social factors.”***

***Marc Petock  
Chief Marketing & Communications Officer  
Lynxspring***

# Niagara to Support C-Suite ESG Needs

## Panelists



**Andy McMahon**  
Head of Global Channel  
*Brainbox AI*



**Manish Sharma**  
Vice President & GM,  
Sustainable Building  
Technologies  
*Honeywell*



**Martin Villeneuve**  
President  
*Distech*  
Controls & SVP Distributed  
Building Technology  
*Acuity Brands*

## Moderator



**Marc Petock**  
Chief Marketing & Communications Officer  
*Lynxspring*





# NS2022

ACCELERATING INNOVATION

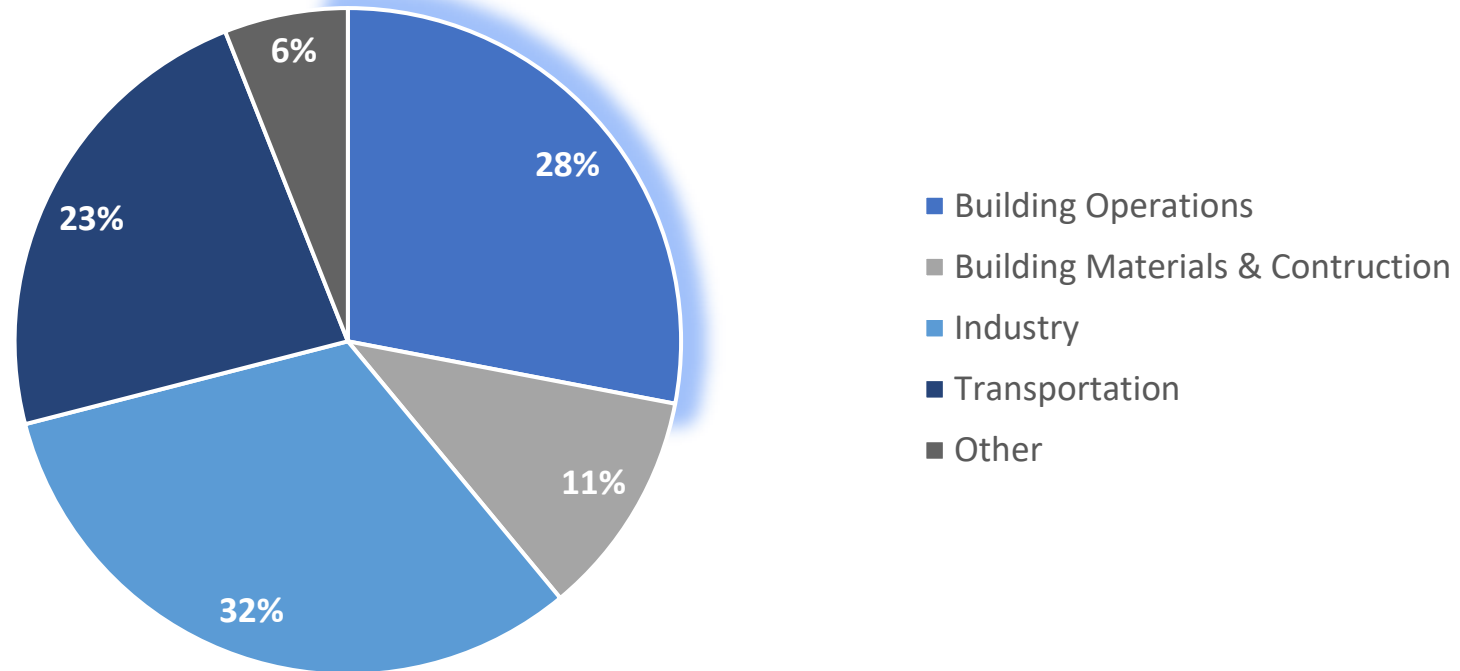
CHARLOTTE, NC | APRIL 4-6

# Martin Villeneuve

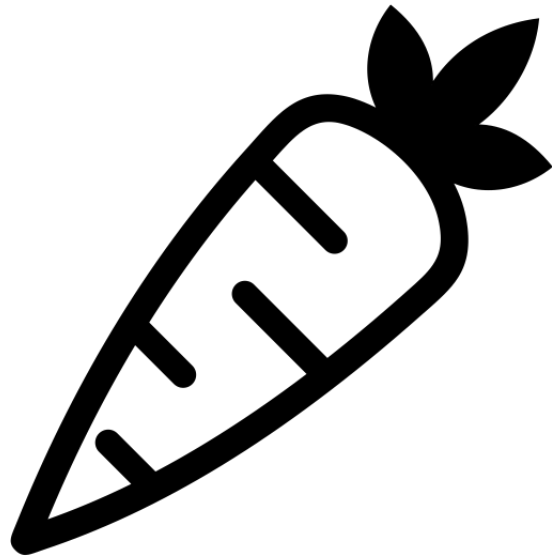
*President, Distech Controls*

# Building Operations: Emissions Problem & Opportunity

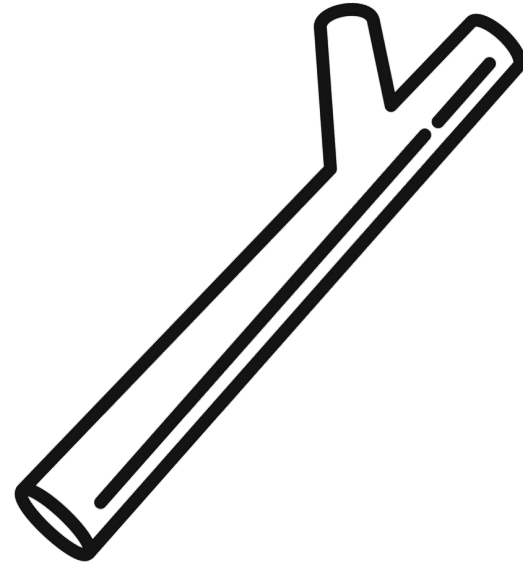
Annual Global CO2 Emissions



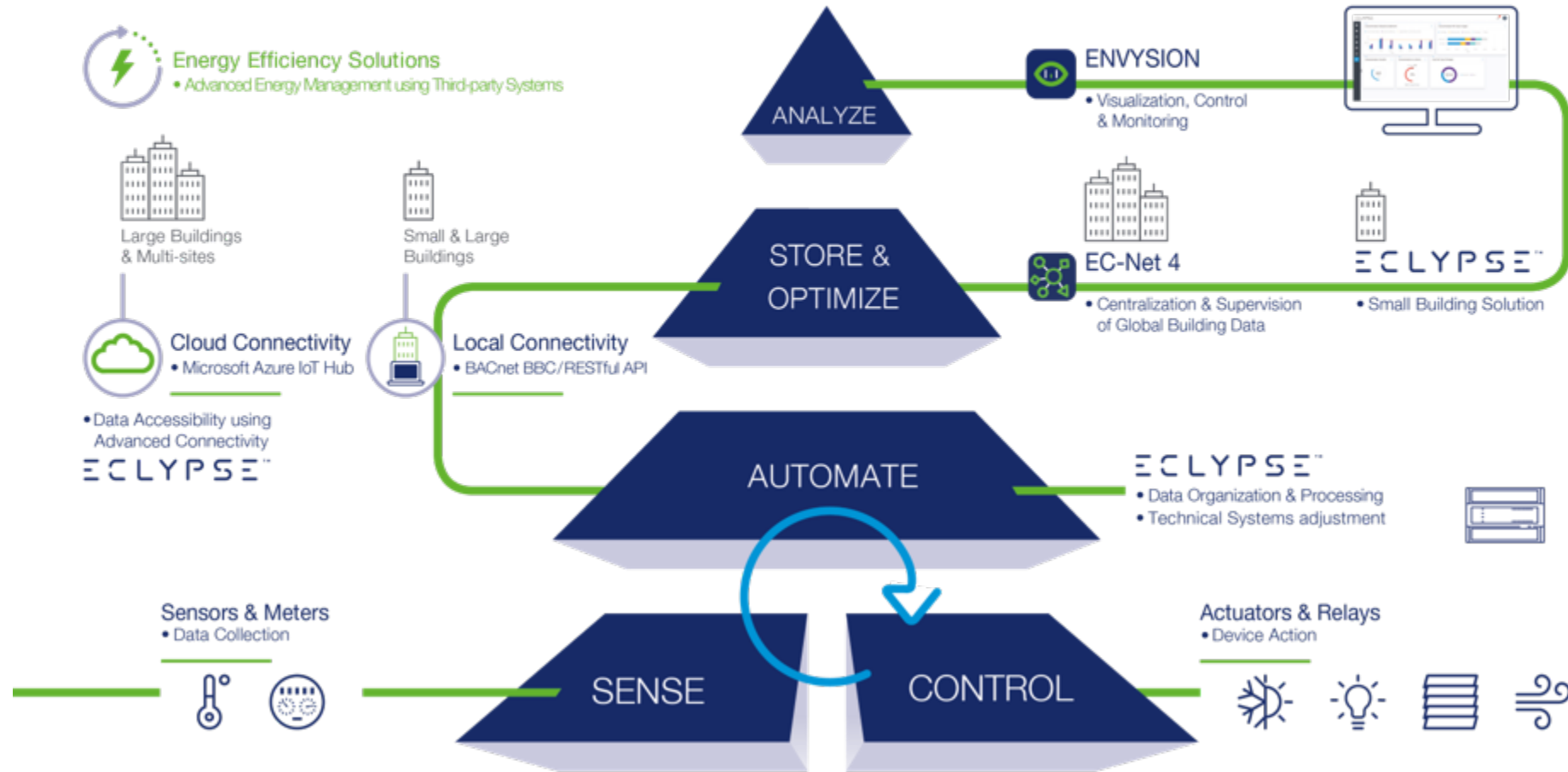
# Energy Efficiency: Incentives & Constraints



VS



# The Building Data's Journey





# NS2022

ACCELERATING INNOVATION

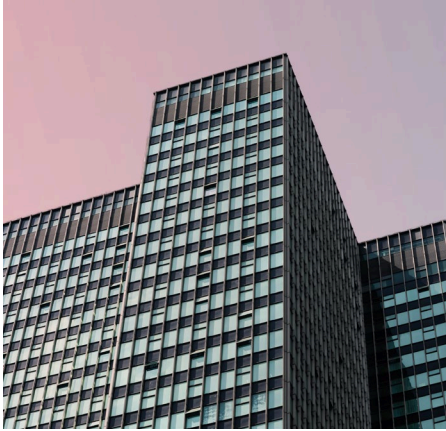
CHARLOTTE, NC | APRIL 4-6

# Andy McMahon

*Head of Global Channel,  
Brainbox AI*



# ESG – What’s in it for the C-Suite?



## Increased property value

- Attract & retain tenants
- Contribute towards building certification programs



## Regulatory Compliance

- State, local & national regulations
- Internal policies



## Investor Demand

- Meet investor expectation
- Work towards climate pledges

# 20% of GHG emissions originate from buildings

- BrainBox AI brings sustainable tech to the built environment, without the premium
- Since 20% of GHG emissions originate from buildings, we are redefining the ways communities can reach their decarbonization goals.
- We believe clean technology should be accessible to all with no financial trade offs.
- We're growing and deploying rapidly around the world because we believe that scale and impact matter in our fight against the climate crisis.
- Our solution has an immediate, positive impact on the environment.
- The ease of installing BrainBox AI into Niagara-based systems make it an easy win for customers concerned about ESG.



**NS2022**

ACCELERATING INNOVATION

CHARLOTTE, NC | APRIL 4-6

# Manish Sharma

*VP/GM, Honeywell Sustainable  
Building Technology*

# ESG AS A BUSINESS DRIVER

*Manish Sharma*

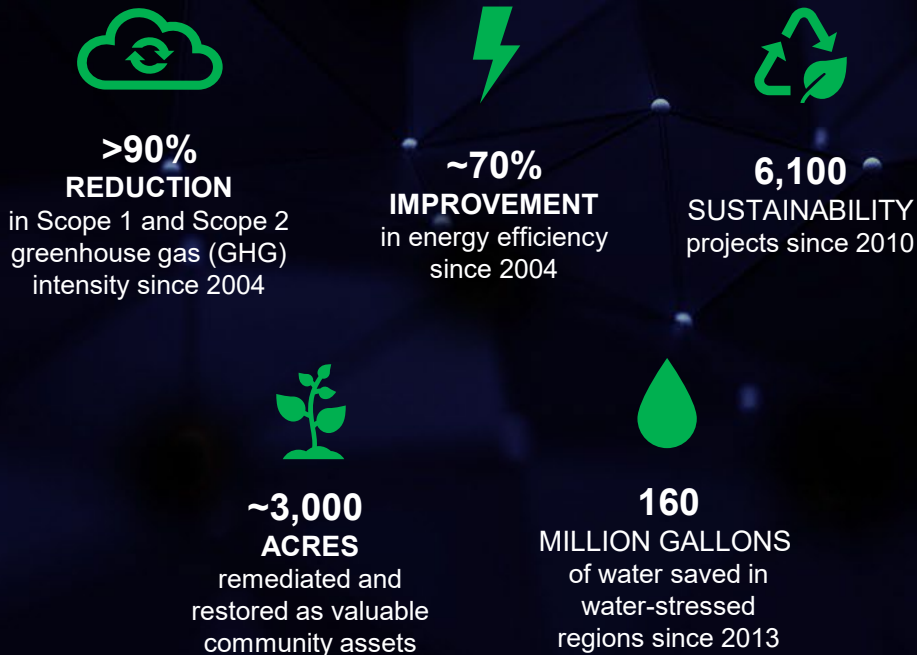
*VP/GM*

*Honeywell Sustainable Building  
Technology*



# HONEYWELL COMMITTED TO CARBON NEUTRAL OPERATIONS BY 2035

## Extensive Progress Since 2004



Already reduced greenhouse gas intensity by >90% since 2004

## “10-10-10” Goals by 2024

- Reduce Scope 1 and Scope 2 GHG emissions intensity by an additional 10% from 2018 levels
  - Projects underway to meet goal
- Deploy at least 10 renewable energy projects
  - 10 complete and >10 more in feasibility
- Achieve certification to ISO’s 50001 Energy Management Standard at 10 sites
  - 17 sites certified

On track to meet our “10-10-10” goals by 2024

## Carbon Neutral by 2035

- In 2021, we announced our **commitment to become carbon neutral in our operations and facilities by 2035** through a combination of:
  - Further investment in energy savings projects
  - Conversion to renewable energy sources
  - Completion of capital improvement projects at our sites and in our fleet of company vehicles
  - Utilization of credible carbon credits
- Have approved projects that would address 20% of remaining emissions by 2023 and will add more projects on continuous basis

**Builds on our history of helping customers meet their environmental and social goals**

**Building on Our Decades-Long History of Sustainability Efforts and Innovations**

# SUSTAINABILITY DRIVERS



## BUILDINGS HEAVY CARBON FOOTPRINT

**38%** of Global Carbon Emissions from Buildings

**28%** of Carbon from Building Operations | **11%** Materials & Construction

**70%** of Carbon in Buildings from Fossil Fuels

**~\$300B** Carbon brokerage market



## ELECTRIFICATION OF EVERYTHING

**+DD%** Growth in Electrical Water Heaters & Heat Pumps (EU)

**+30%** Growth in EV Charging Stations

Industrials Electrifying **Equipment & Fleet**



## REGULATIONS & NET ZERO COMMITMENTS

**140** Countries Covering **90%** of Emissions have a **Net 0** Goal

**~20%** of 2000 Largest Public Companies Committed to Net Zero

**\$1T** EU Green Deal | Efficiency, Climate Tech | 10 years

**\$1.7T** US Fund for Climate Resilience | 10 years

**+\$87B** Invested in Climate Tech from H1 2021



## INDOOR AIR QUALITY

IAQ monitors Global Market expected to reach **\$6.1B** by 2027

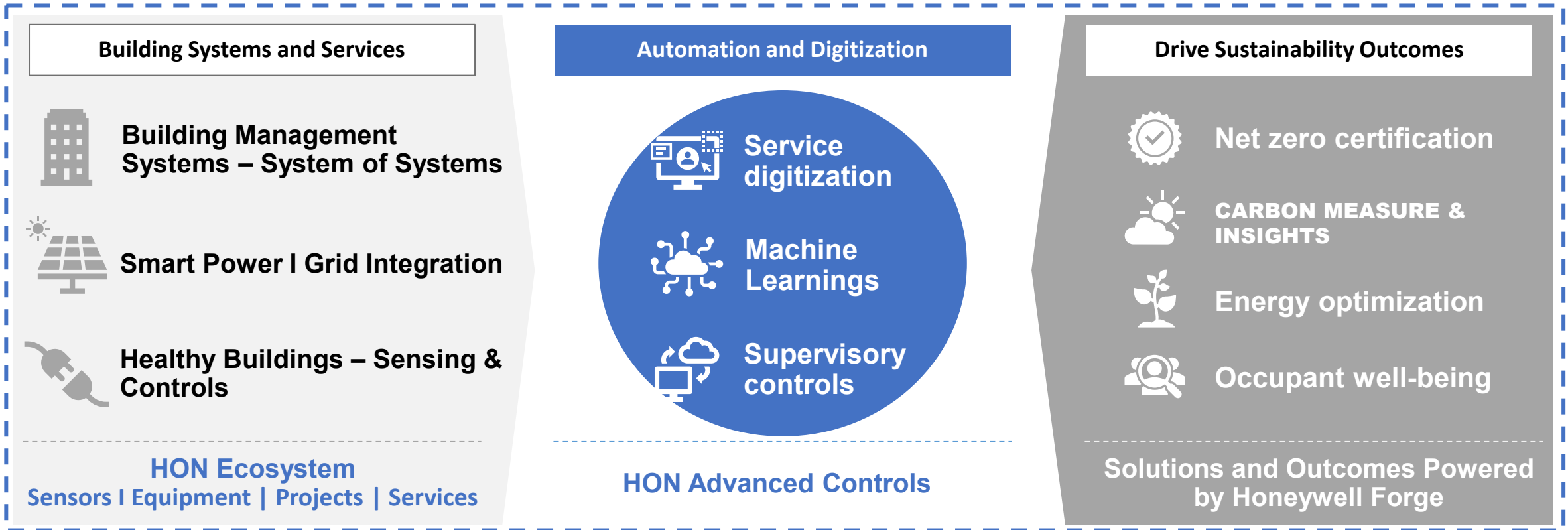
Air Quality Monitoring is growing at CAGR **5.8%** over next 5 years

**\$122B** of US Federal Funding to help schools reopen safely driving adoption

## BUILDINGS NEED TO BECOME MORE SUSTAINABLE

# SHAPING A MORE SUSTAINABLE FUTURE

PLATFORMS AND ECOSYSTEM TO LEAD THE PATH TO SUSTAINABLE BUILDINGS



Making Buildings a Part of Customers' ESG Goals

Thank you!

