

**NETIX.AI**  
THE SMART MOVE



YOUR IoT & AI SOLUTIONS PARTNER



Distribution

Products & Technology

System Integration/ Services



# NETIX.AI

## WHO WE ARE

NETIX.AI is an **IoT & AI** based automation solution provider, leverages its innovative strategies, analytic algorithms and brand agnostic solutions to transform your facilities into safe and sustainable edifices.





# INNOVATION AND SUSTAINABILITY

# OUR SOLUTIONS

- IoT and AI Solutions for Buildings & Industrial
- Enterprise Solutions
  - iCCCC – SaaS based Command Control Center
    - Property Management Platform
    - Asset Management Platform
    - Energy Management Platform
    - Facility Management Platform
- Leading the BMS Transformation – Legacy System Upgrades
- Smart Cities - Connected Buildings & Remote management
- iIBMS – intelligent Integrated Building Management System
- Smart Meters, Smart Thermostats & Gateways
- NETIX.AI Sustainability Financed Solutions





# NETIX – IoT & AI SOLUTIONS PROVIDER

## Legacy System Upgradation



ESTEEMED BANK - 11 BUILDINGS INTEGRATION

## Enterprise Solutions



CITYWALK - 15 BUILDINGS INTEGRATION

## Remote Connectivity



AL WASL - 93 BUILDINGS INTEGRATION OVER RF NETWORK OVER 50 sqKm

## Right To Repair



MAZAYA - 3 TOWERS INTEGRATION



# Our Financed Models

*TRANSFORMING TODAY TO CREATE  
A BETTER TOMMOROW*

At NETIX.AI, we aim at providing flexibility to meet the expectation of the customer. We offer a wide range of customized fully financed models by taking into consideration the potential savings of the facility.





# POPULAR MODELS

## ➤ **iIBMS as a Service - 3 Year Contract\***

Under this model, NETIX.AI will finance the IoT, Automation and/or BMS Transformation solutions, offering the upgrades as an individual service for the facility. The customer will enter into a monthly fixed amount re-payment plan with NETIX.AI, for a contract duration of 3 years. The re-payment amount will be agreed by both parties and will include the cost of the solutions, commissioning and annual maintenance fees.

## ➤ **iIBMS & Energy as a Service – 5 Year Contract\***

In the scenario that higher savings can be achieved at the customer's facility through the implementation of other energy conservation measures, NETIX.AI will undertake the financing and commissioning of all the conservation measures, including the Netix IoT, Automation and/or BMS Transformation solutions. The re-payment amount will be agreed by both parties and will include the solutions, commissioning and annual maintenance fees of NETIX.AI Platform and other energy upgrades as suitable to the facility.

## ➤ **BMS & Energy Upgrades on Shared savings model – 10 Year Contract\***

This model includes the implementation of a full-fledged Energy Savings contract, based on the potential savings of the facility. NETIX.AI will undertake the complete financing of the project, both in terms of CAPEX and OPEX. NETIX.AI has in-house engineering strengths, enhanced by reliable manufacturers of various solutions. Re-payment of the upgrades will be made based on the performance of the project, with energy and other building OPEX savings to be split between both parties at pre-agreed ratios.



## What is the **NIX** product?

A **connectivity platform** to simultaneously collect actual process, machine, and shop floor data from multiple sources, (pre-) process, store, and forward to multiple internal and external third-party applications and services.

-Enables **remote monitoring**, and quick decision-making and provides **data feed** to any **dashboarding** tools and **advanced analytics** applications.

## Benefits



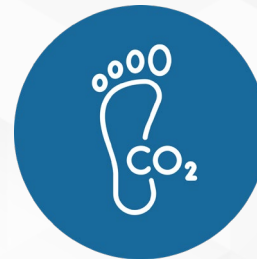
Realtime Energy Monitoring and Production visibility



Insight driven Decision making



Improved line/machine asset utilization



Reduction in Carbon Footprint



Resilient and compliant modern architecture to support 24 x7 operations



Automation integrated (PLC, IoT..)



# The **NIX** platform offers the following abilities:

## CREATE YOUR OWN DATA MODEL

**NIX** platform provides a framework for you to define your equipment, materials, processes, and the relationships between them

## COLLECT YOUR PLANT FLOOR DATA

**NIX** connects to your equipment and existing industrial historians, collecting time series and event data from your plant floor using the configuration of the central data model.

## INTEGRATE YOUR BUSINESS SYSTEMS

Your business uses more than just time series data. When you connect other data sources like your ERP and quality systems into your configuration, **NIX** “stitches” them together in the model removing inefficient data silos

## BUILD OR DEPLOY YOUR USE CASE APPLICATIONS

“Headless” backend for manufacturing that provides all your data through one API.

You can buy, customize pre-built applications, if they suit your business or build your own.

## SCALE YOUR SYSTEM

**NIX** is built to provide infinite horizontal scaling without adding servers and license costs



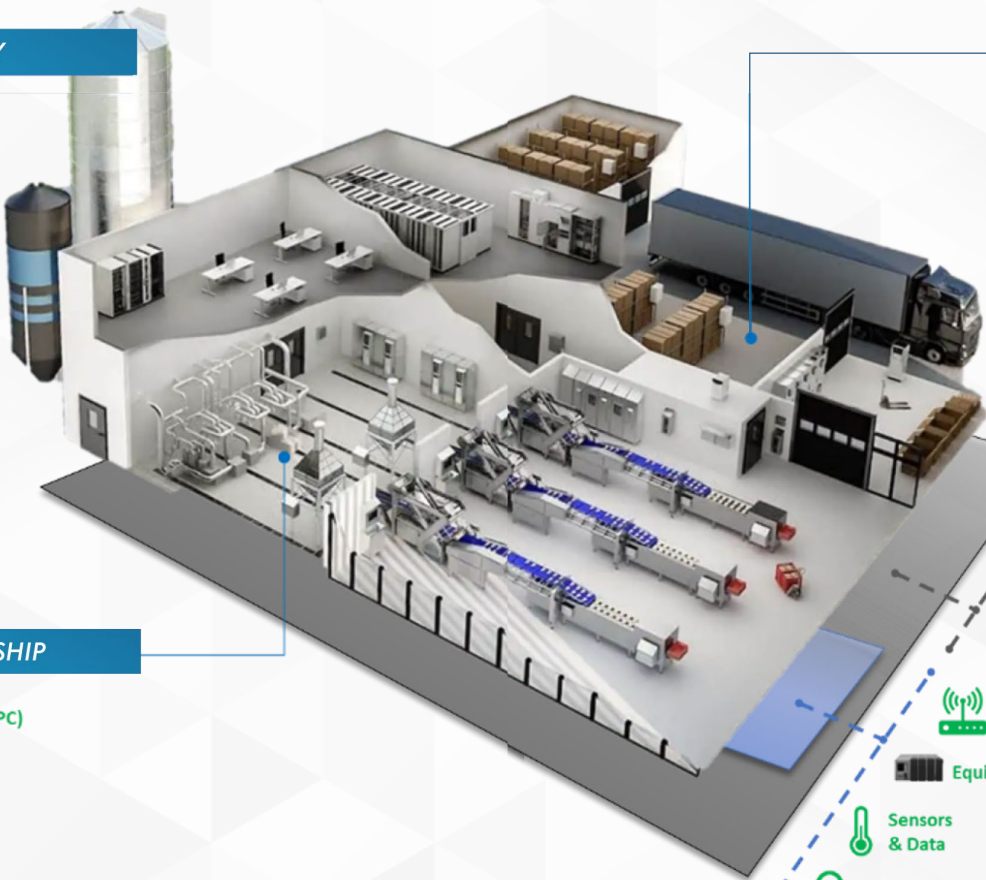
# Digital Connected Factory

## CONNECTED FACTORY

- Mobile Operator Dashboard
- Realtime Production Visibility
- Paperless Workflows
- Predictive Maintenance
- Labour Planning
- Remote Support

## PROCESS MASTERSHIP

- Advanced Process Control (APC)
- Digital Twin
- Simulation Tools
- Data Analytics for Process Insights



## CUSTOMISED PRODUCTION

- End of Line Automation
- Flexible process lines
- Automated Vehicles

## TECHNOLOGY FOUNDATION

- SAP ERP Integration
- Plant Integration  
Historian, SCADA, MES
- EDGE Devices & IoT Management
- Equipment PLC
- Sensors & Data
- Cyber-security
- Central Leveraged Platform
  - Data lake
  - Multi-system integration
- Wired & Wireless Infrastructure





# Challenges for Multiple Property Owners



# NETIX.AI SOLUTION



Intelligent integrated  
Command & Control Center



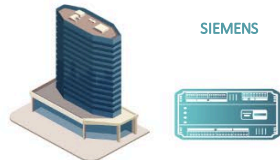
SaaS NETIX.AI Platform Hosted  
on the Hybrid Cloud



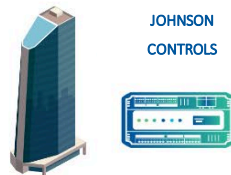
## Dedicated Client TCP/IP Network



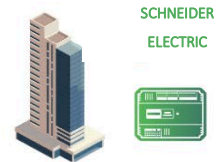
HONEYWELL



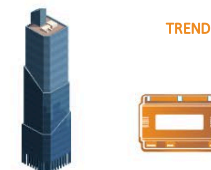
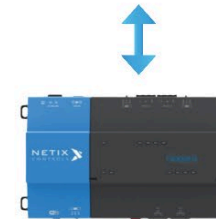
SIEMENS



JOHNSON  
CONTROLS



SCHNEIDER  
ELECTRIC



TREND



## Machine Learning & AI

- > Automatic equipment analysis
- > Increases efficiency and reduces maintenance & energy costs

## Remote Alarm Management

- > Creates Algorithms to initiate proactive maintenance
- > Generates Automatic Work orders based on events

## Operations & Control

- > Take over control of systems remotely to operate as per SME advice
- > Ability to change setpoints
  - > Maintenance histories
  - > Past potential problems
  - > MTBF / MTBR

## Predictive Maintenance

- > Creates Algorithms to initiate proactive maintenance
- > Generates Automatic Work orders based on events

## KPI/Dashboards

- > Defined KPIs for Operational control
- > Provides report KPIs, Historical analysis & trends

## Future Provisions

- > Provision to connect all other building systems like Access control, CCTV, Fire Alarm etc.
- > Provision for predictive customer management

## In-depth auto diagnosis

- > Identifies cause of alert
- > Identifying potential problems
  - > Identifying remedies
- > Sends full information to the CMMS system for technician reference

**NETIX.AI**

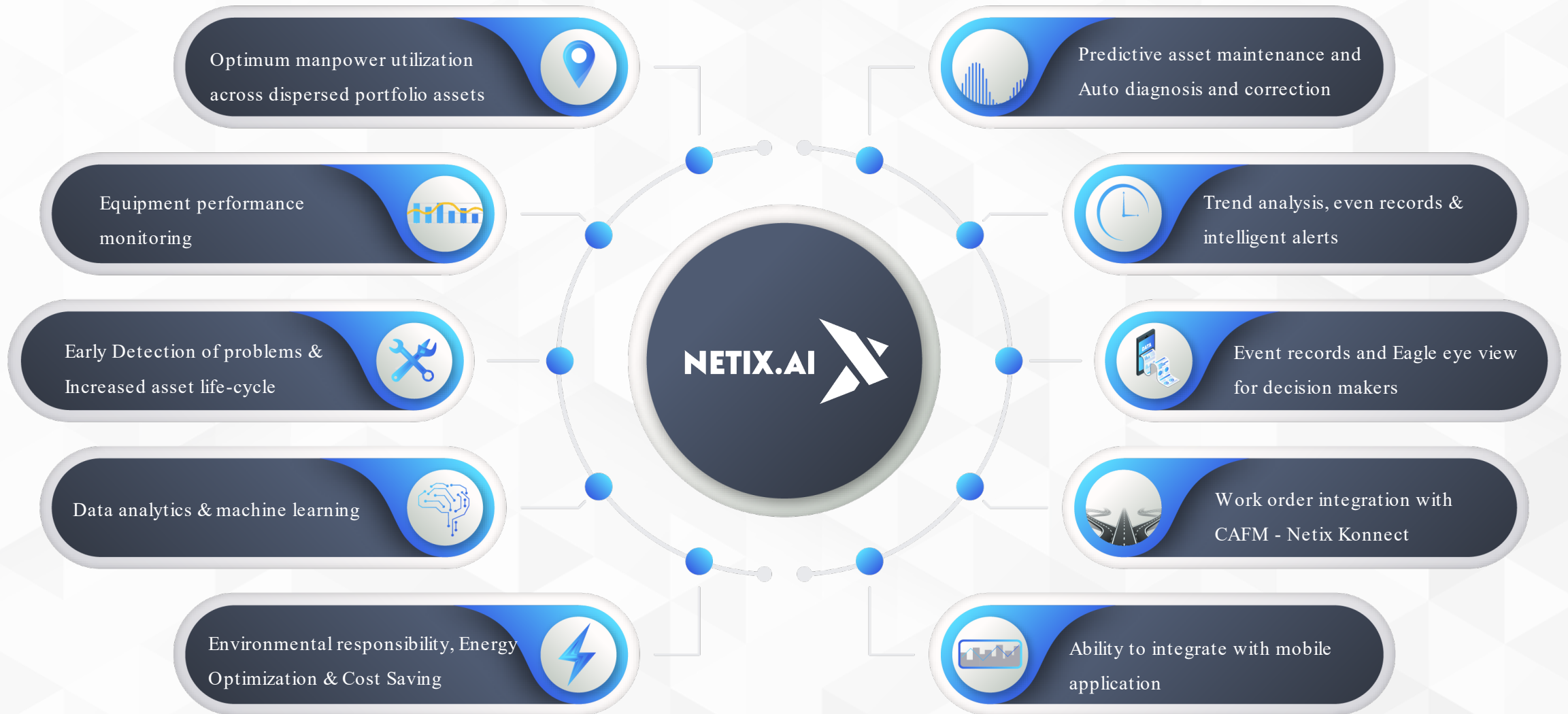


## Easy Access

- > Access to Community Management team anytime, anywhere
- > Easy and quick access to information for key decision making



# NETIX.AI Deliverables





# Real-time Fault Detection and Diagnostics

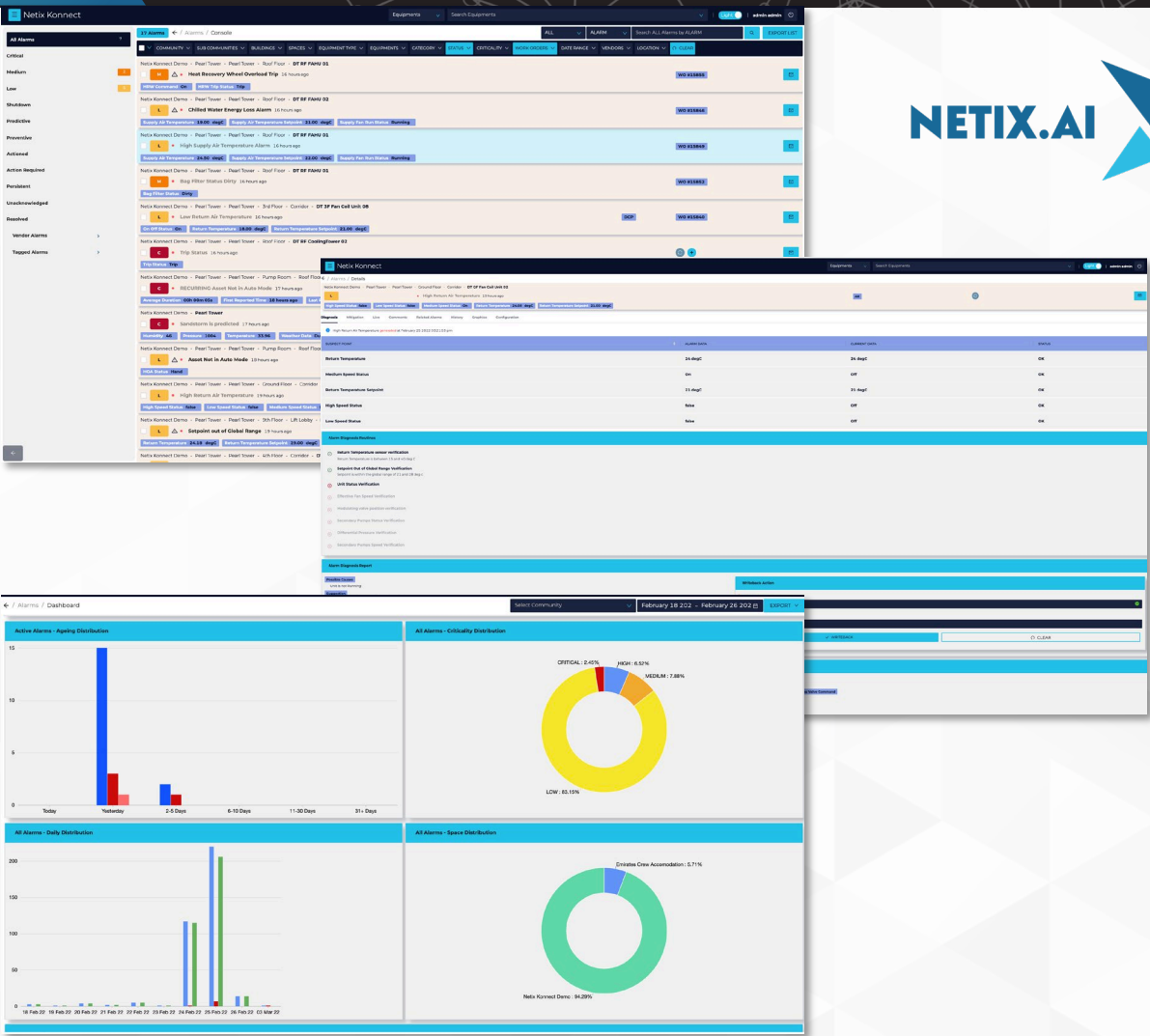
Optimize your operations with fully automated, context-aware monitoring

## Real-time Alarm Management

- AI & ML driven alarm correlation and real-time diagnosis
- Intelligent false alarm differentiation and root cause analysis

## Intelligent Workflow Automation

- Extensive FDD + asset rule library for simple and complex conditions
- Smart workflow Engine to automate complex use cases
- Real-time condition/threshold based monitoring for improved asset life



# Energy Performance Analytics & Reporting



## Portfolio-wide centralized insights

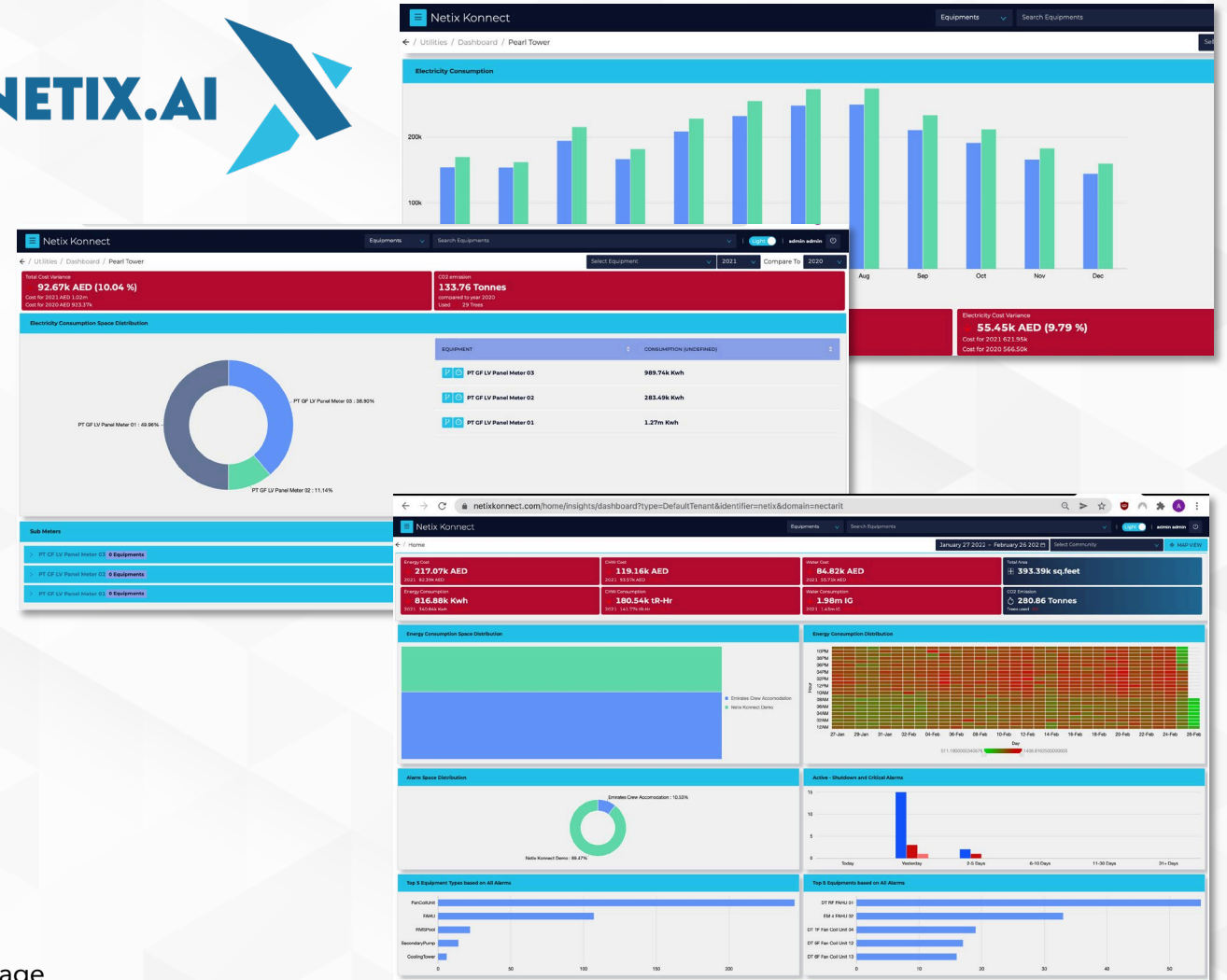
- Live metrics and insights on portfolio-wide centralized dashboards
- Baseline comparison to track ideal asset and energy performance across portfolio

## Drill-down Performance

- Drill-down and peak energy analytics with consumption heatmaps
- EnPI based regression analysis and performance benchmarks

## Fully customisable Dashboards and Reporting

- Intuitive UI to customise and create widgets or reports on your own
- User-defined text, image and readings based cards
- Role-based sharing of dashboards with operators and supervisors on same page





ACHIEVE

**TRUE SUSTAINABILITY**

WITH NETIX.AI



# DRIVING ESG WITH NETIX.AI

ENVIRONMENT SOCIAL GOVERNANCE



**40-50%**

Reduction on  
Building  
Operational  
Costs

**10-15%**

Reduction  
on Building  
Energy  
Profiles

**80%**

Reduction on critical  
breakdowns using  
predictive condition  
algorithms

**30-40%**

Enhancement of  
manhour utilization  
through fault  
detection  
diagnostics



Reduced manpower related OPEX



Reduced  
Energy Costs



Reduced FM  
costs



Optimised  
Manpower



Detailed  
Records



Monitored Equipment  
Performance

*The above statistics are site-specific and liable to vary.*



# SUCCESS STORIES



ODS Global, NETIX.AI Platinum Partner, is successfully managing the preventive maintenance of the BMS across multiple properties from EMAAR portfolio. Being a NETIX.AI Platinum Partner enabled ODS Global to be a vendor neutral service provider.

- ⇒ Optimized operations and enhanced the performance output of BMS & ETS across 30 plus Communities, 5 Master Communities serving 20,000 villas and close to 200 buildings. The platform currently hosts 40k assets & 400,000 data points managing optimization of assets and energy efficiency.
- ⇒ Maintaining 5 different brands of BMS with equal efficiency and approach, similar to the manufacturer's guidelines:  
Honeywell | Siemens | Trend | Johnson Controls | Schneider
- ⇒ Managed and undertaken to upgrade systems with as little intrusion as possible, enabling a seamless transition at minimal cost.
- ⇒ Improved life cycle of the DDC controllers and field peripherals, helping in reducing downtimes of the BMS.





# SUCCESS STORIES



**DAMAC**

When ODS Global started the project, as NETIX.AI Platinum Partner, multiple towers had their BMS systems offline. ODS has successfully managed to bring the systems back, online, with minimal cost impact to the client. This enabled DAMAC to save a considerable amount on the energy bills of these properties.

- Optimized operations and preventive maintenance for 30 buildings  
Performed maintenance for 7 different brands of BMS, resulting in streamlined and centralized asset management.
- Honeywell | Alerton | Siemens | Sauter | Saia Burgess | Schneider | Centraline
- Improved the life cycle of fixed assets.





# SUCCESS STORIES



ODS Global, NETIX.AI Platinum Partner, won the upgrade and maintenance of 3 Mazaya Towers' buildings, where the client saved 75% of their costs since they didn't have to replace the complete system, by upgrading to Netix Solutions instead.

- ⇒ Integration of all the systems and assets of three towers onto the AI-powered intelligent integrated Command and Control Centre; maintenance of the same.
- ⇒ Achieved proactive, organized and systematic management of energy use in all three towers.
- ⇒ Transformed facilities into smart connected building system.



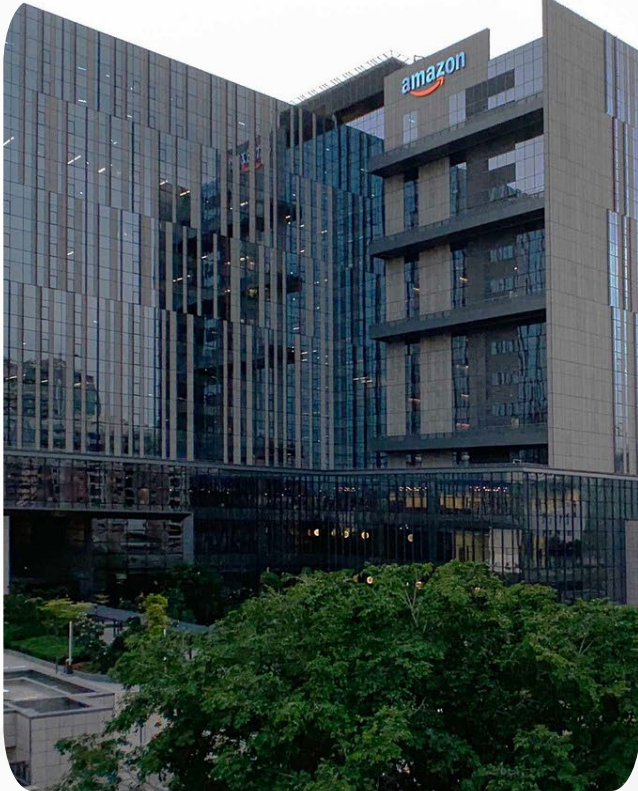


# SUCCESS STORIES

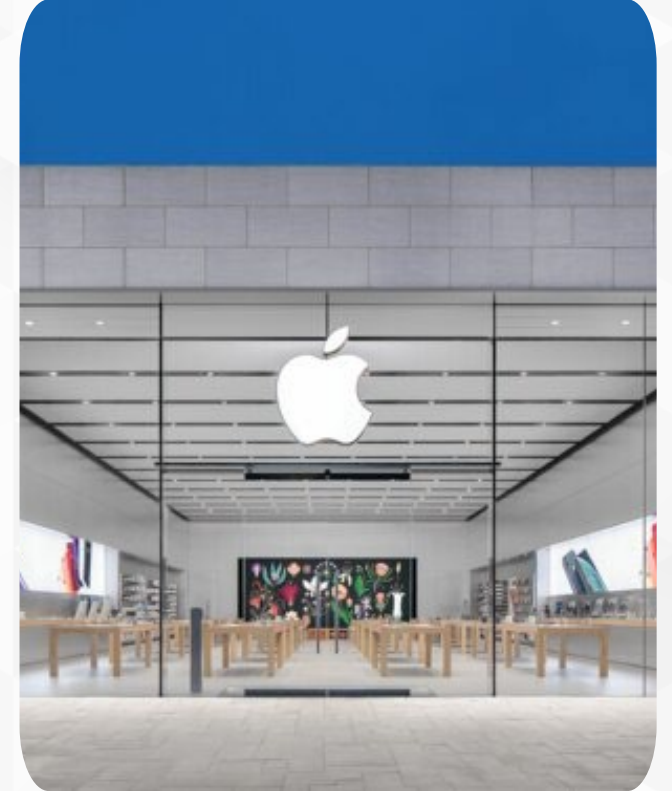




# SUCCESS STORIES



amazon.in





# KEY REFERENCES UAE



First Abu Dhabi Bank, Abu Dhabi,  
UAE



Mazaya Business Avenue, Dubai,  
UAE



City Walk, Dubai,  
UAE



Al Jaddaf Residence, Dubai,  
UAE



Tadawul Tower, Riyadh,  
KSA



Emirates Airlines Staff Accommodation, Dubai, UAE



DWC Headquarter Building, Dubai,  
UAE



Masdar City, Abu Dhabi,  
UAE



Darwish Tower, Doha,  
Qatar



Mirdif City Centre, Dubai,  
UAE



93 Al Wasl buildings, Dubai,  
UAE



Etisalat Digital 77 buildings, Dubai,  
UAE



# OUR CLIENTS

citibank

Google

MERAAS

JLL

تداول  
Tadawul



Schindler



DAMAC

CBRE

MAERSK  
LINE

كتارا  
katara

Lulu  
Where the world comes to shop.

amazon

MERAAS

HDFC BANK



MERAAS

تداول  
Tadawul



Standard  
Chartered



MERAAS

مترو دبي  
Dubaimetro



Masdar  
A MUBADALA COMPANY

Deutsche Bank



ascendas



اتصالات  
etisalat

STU

NETIX.AI  
THE SMART MOVE





**NETIX.AI**  
THE SMART MOVE



**The Netherlands - HQ**

Beechavenue 115, 1119RB, Schiphol-Rijk,  
Tel: +31 6 85436139

**Canada**

46 Annual Circle, L6X 2M2  
Brampton, Ontario  
Tel: +1 514 582 9868

**Dubai**

Suite No. 404-410, Diamond Business Center,  
Block A, Arjan, South Barsha  
Tel: +971 4 580 2129

**Abu Dhabi**

Office No. 703, Silverwave Tower  
P.O. Box: 37072, Mina Road  
Tel : +971 2886 4748

**India**

Office Unit No.411, V Times Square, Sector 15  
CBD Belapur, Navi Mumbai,  
Tel: +91 22 4968 7447