



# NIAGARA SUMMIT 2026

SEAMLESS CONNECTIVITY,  
POWERFUL INTELLIGENCE

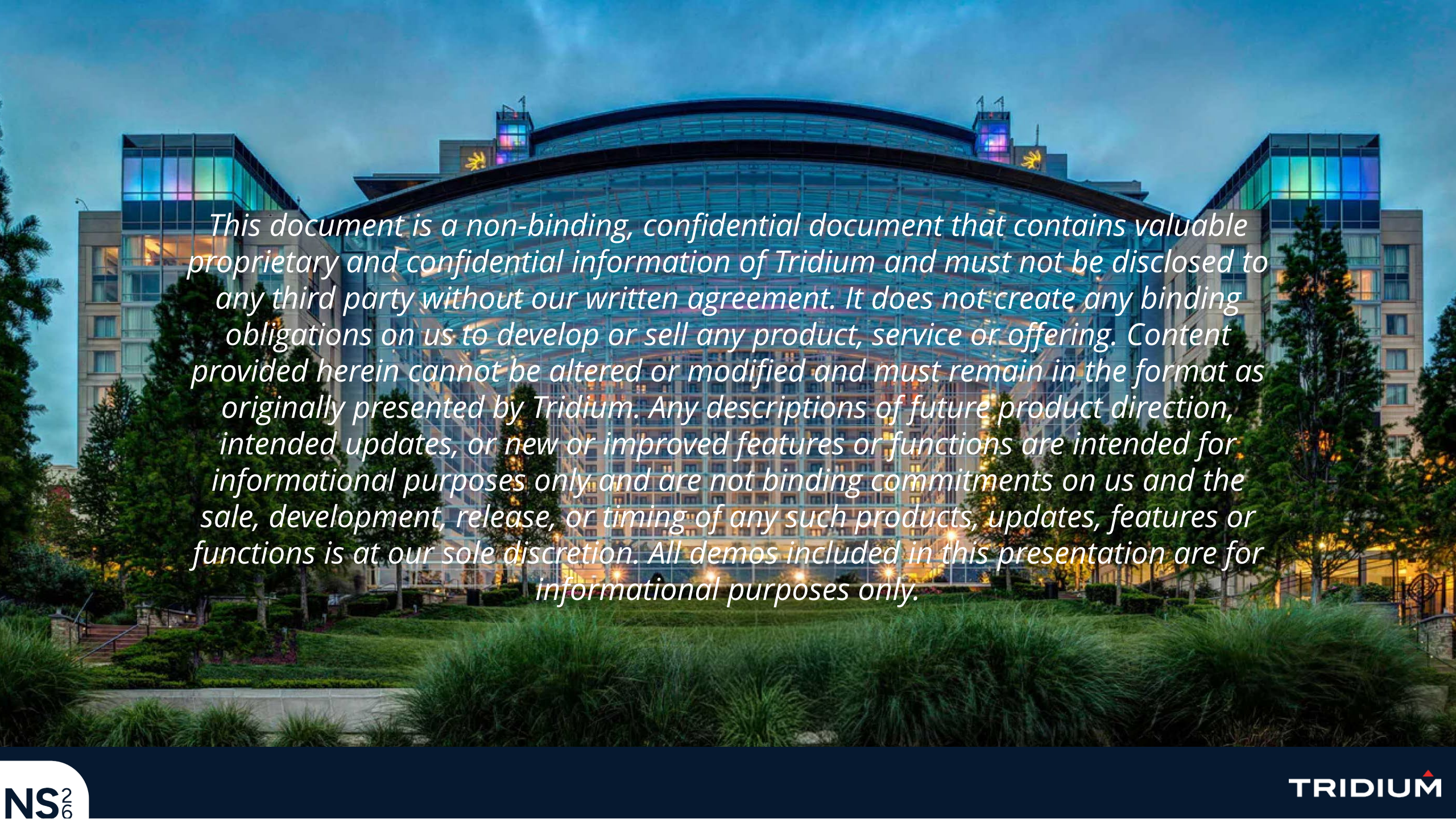
TRIDIUM 

# Evolving Niagara | A Necessary Revolution

Michael McLaughlin  
Sr. Sales Engineer

A white, semi-circular graphic containing the text "NIAGARA SUMMIT 2026" in a bold, dark blue, sans-serif font. The background of the slide is a photograph of a large, modern glass-walled building at dusk, with interior lights glowing and some exterior lighting visible. The building has a curved, arched top. In the foreground, there are some green plants and a lawn.

**NIAGARA  
SUMMIT  
2026**



*This document is a non-binding, confidential document that contains valuable proprietary and confidential information of Tridium and must not be disclosed to any third party without our written agreement. It does not create any binding obligations on us to develop or sell any product, service or offering. Content provided herein cannot be altered or modified and must remain in the format as originally presented by Tridium. Any descriptions of future product direction, intended updates, or new or improved features or functions are intended for informational purposes only and are not binding commitments on us and the sale, development, release, or timing of any such products, updates, features or functions is at our sole discretion. All demos included in this presentation are for informational purposes only.*

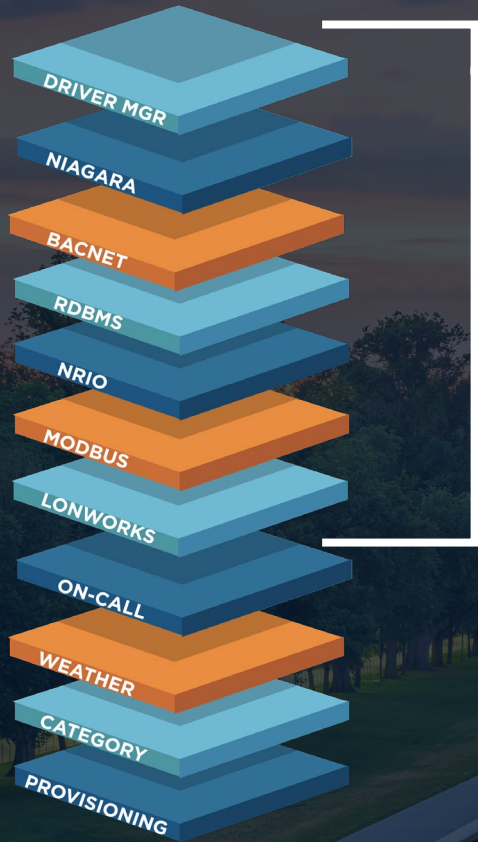


# Evolving Niagara: A Necessary Revolution

4.15 engineering moves to the browser

# HTML5 WEB VIEWS - Evolution

niagara 4.14



+ niagara 4.15



+ niagara remote™

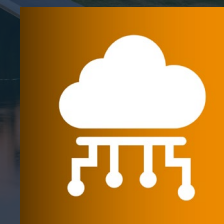
*A Significant Step-Up in*



**DEPLOYMENT EASE**



**DATA MANAGEMENT & VISUALIZATION**



**INTEROPERABILITY & CONNECTIVITY**

# HTML 5 PX Editor HTML 5 Relation Manager

Live Demo



"All demos are for informational purposes only."

# Fox Over WebSockets | Revolution

A new option for;

- Station-to-station
- Workbench-to-station

communication utilizing the commonly available secure HTTPS port 443

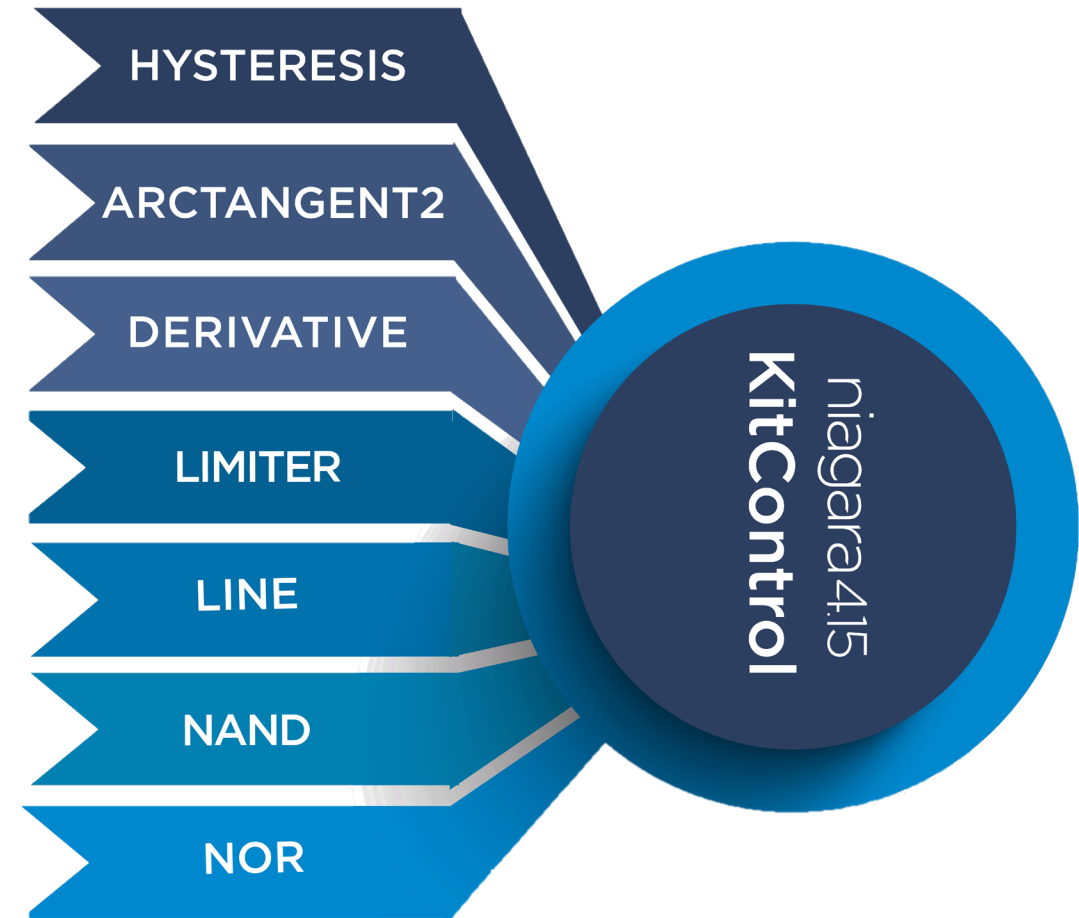
The image displays two screenshots of the Niagara Workbench interface. The top screenshot shows the configuration page for 'FoxService'. The left sidebar contains a navigation tree with 'FoxService' selected. The main panel shows a list of properties for 'FoxService', including 'Fox Port', 'Fox Enabled', 'Foxs Port', 'Foxs Enabled', 'Foxs Only', 'Foxs Min Protocol', 'Fox Over WebSocket Enabled', 'Cipher Suite Group', and 'Foxs Cert'. The 'Fox Over WebSocket Enabled' property is set to 'true'. The bottom screenshot shows the configuration page for 'Floor\_02'. The left sidebar contains a navigation tree with 'Floor\_02' selected. The main panel shows a list of properties for 'Floor\_02', including 'Last Connect Time', 'Last Disconnect Time', 'Last Disconnect Cause', 'Port', 'Use Foxs', 'Fox Over WebSocket', 'Fox Over WebSocket Port', 'Fox Over WebSocket In Use', 'Last Failure Time', 'Last Failure Cause', 'Retry Period', and 'Next Attempt Time'. The 'Fox Over WebSocket' property is set to 'Use WebSocket Only'.

# KitControl Objects | Evolution

ASHRAE 231P-ALIGNED control blocks supporting a Unified, interoperable Control Design Language (CDL)

## Making logic blocks

- More Standardized
- More Portable



# Fox Over WebSockets New Kit Control Objects

Live Demo



"All demos are for informational purposes only"

# Certificate Signing Service | Evolution

Establish, monitor, and renew Niagara installation's PKI at scale and with ease to enforce secure communication and maintain a strong security posture.

Individual Signing Requester

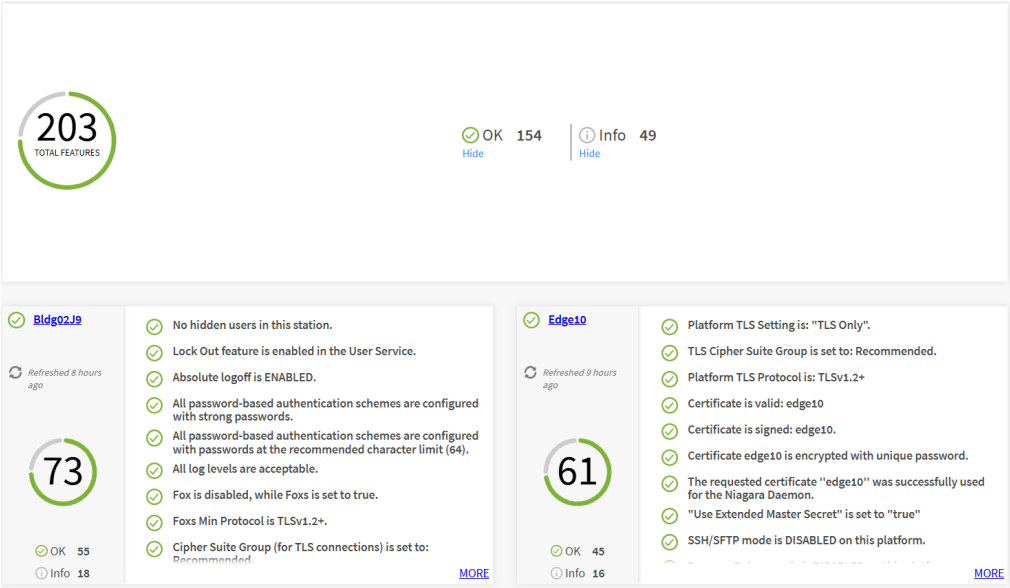
Combined Request:  
Fox Service, Web Service, Platform

Provisioning Jobs for Deployment

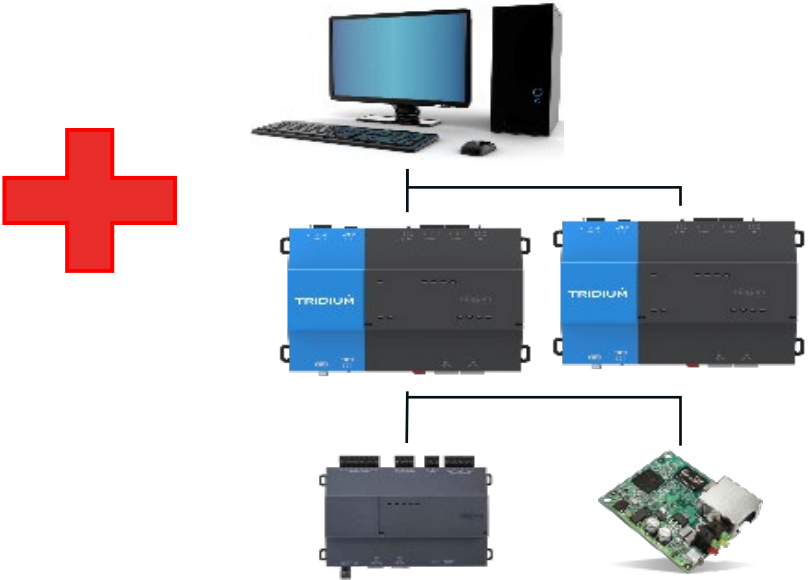
The screenshot displays a management console interface. On the left is a navigation pane titled 'Nav' containing a list of services: LogHistoryService, OnCallService, ProgramService, ReportService, RoleService, SAMLIdPService, SearchService, SecurityService, SigningService (highlighted), SystemDbService, and SystemMonitorService. On the right is a 'Property Sheet' for the selected 'SigningService (Signing Service)'. The properties are: Status: {ok}, Fault Cause: (empty), Enabled: true (with a green indicator), Profiles: Profiles Folder (expanded to show serverProfile: Simple Signing Profile), and Transports: Signing Transport Folder (expanded to show foxTransport: Fox Signing Transport and localTransport: Local Signing Transport).

# Multi-tiered Security Dashboard | Evolution

Quickly assess the security posture of a Niagara Network of any layout, at scale

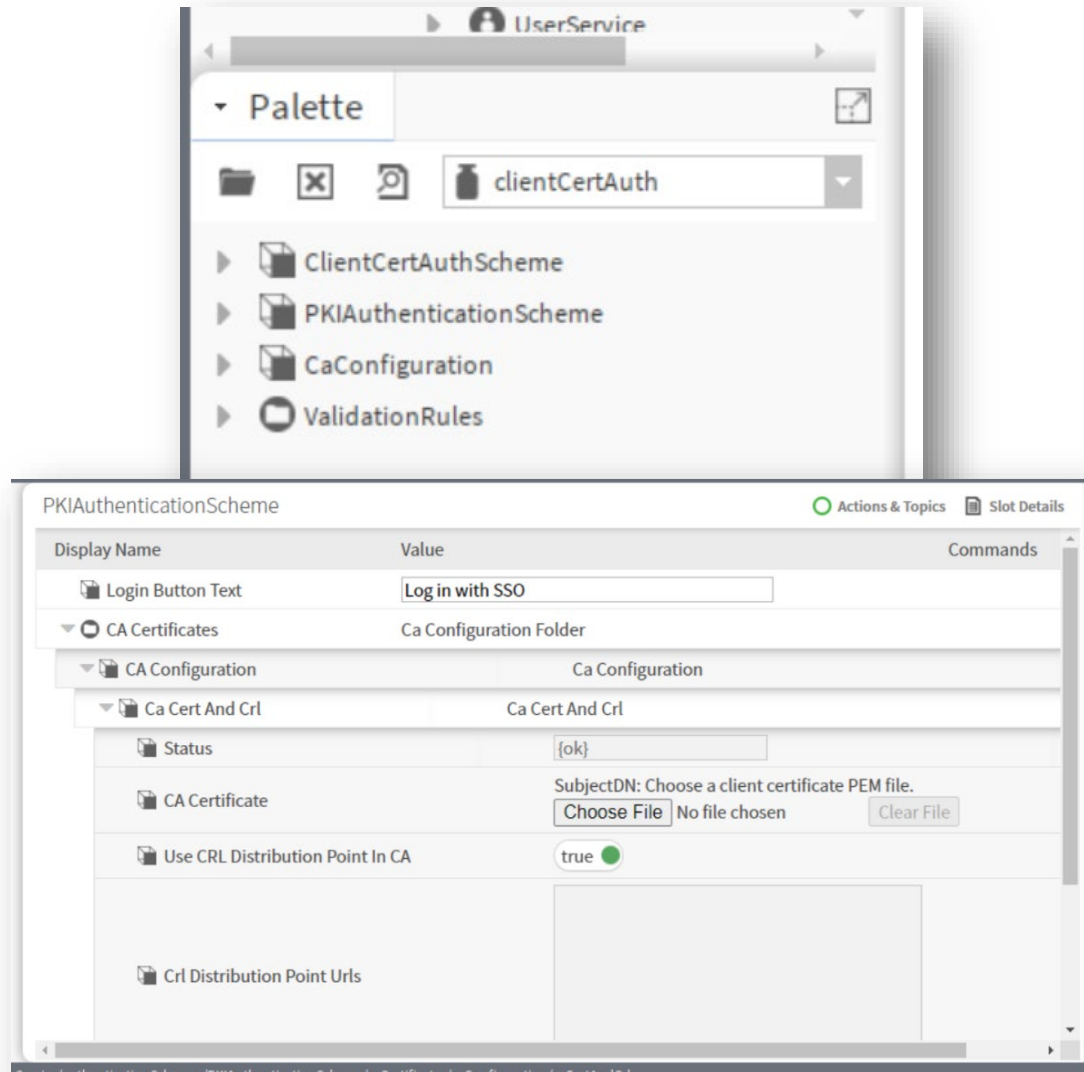


## Multi-Tiered Navigation

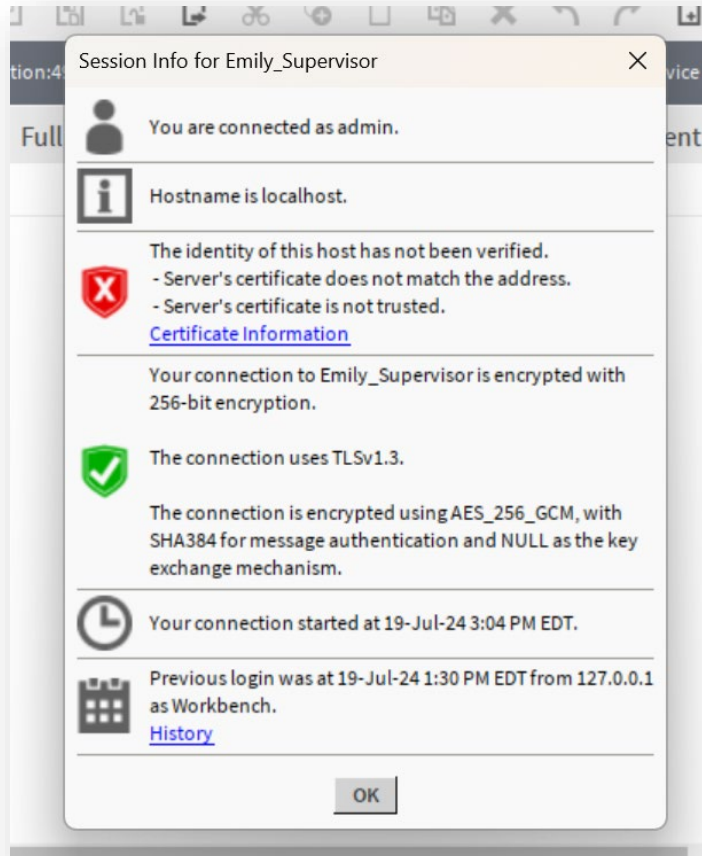


# Pki Authentication For Browser | Evolution

Simplifies authentication process for organizations that rely on PKI-based authentication, such as government and defense environments; for example, Common Access Cards.



# User Login History | Evolution



Session Info for Emily\_Supervisor

You are connected as admin.

Hostname is localhost.

The identity of this host has not been verified.

- Server's certificate does not match the address.
- Server's certificate is not trusted.

[Certificate Information](#)

Your connection to Emily\_Supervisor is encrypted with 256-bit encryption.

The connection uses TLSv1.3.

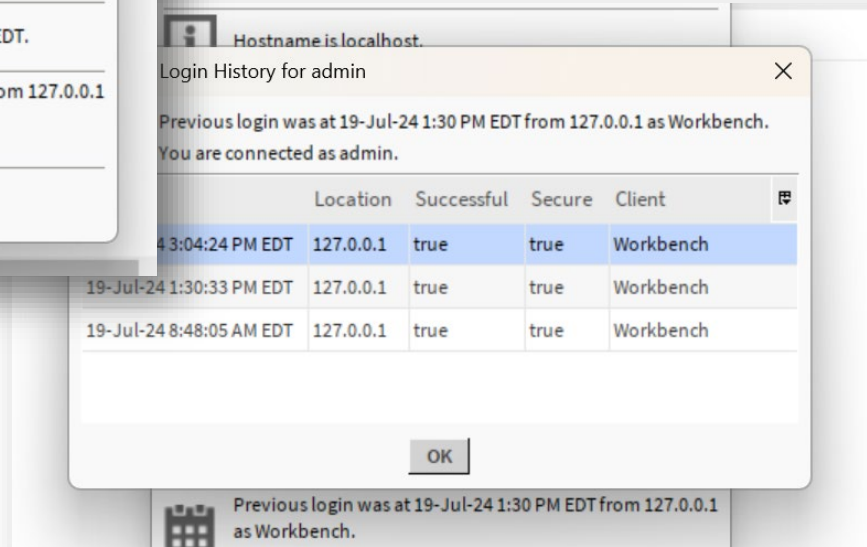
The connection is encrypted using AES\_256\_GCM, with SHA384 for message authentication and NULL as the key exchange mechanism.

Your connection started at 19-Jul-24 3:04 PM EDT.

Previous login was at 19-Jul-24 1:30 PM EDT from 127.0.0.1 as Workbench.

[History](#)

OK



Login History for admin

Previous login was at 19-Jul-24 1:30 PM EDT from 127.0.0.1 as Workbench.

You are connected as admin.

	Location	Successful	Secure	Client
19-Jul-24 3:04:24 PM EDT	127.0.0.1	true	true	Workbench
19-Jul-24 1:30:33 PM EDT	127.0.0.1	true	true	Workbench
19-Jul-24 8:48:05 AM EDT	127.0.0.1	true	true	Workbench

OK

Previous login was at 19-Jul-24 1:30 PM EDT from 127.0.0.1 as Workbench.

Users can ensure that they recognize all logins to their account, helping **DETECT POTENTIAL ATTACKS** on the system.

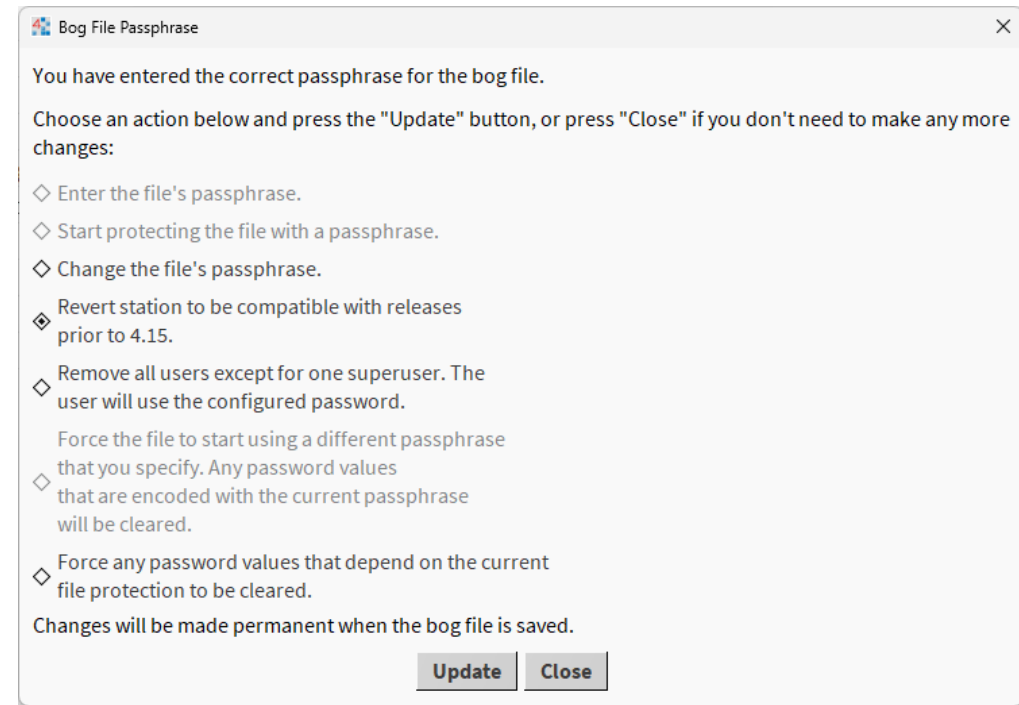
# Encrypting Hashed Passwords | Evolution

Increasing defense against cyber threats with encrypted, salted, and hashed **PASSWORDS** in offline bog files.

ENSURES  
REGULATORY  
COMPLIANCE

SECURE BY  
DEFAULT

PROTECTION  
AGAINST DATA  
BREACHES



# Security Login History Encrypted Hashed Passwords

Live Demo



"All demos are for informational purposes only."



# Bacnet Test Labs Certification - Evolution

- ASHRAE Standard 135 open communication protocol of choice for field devices
- B-BC Profile for Supervisor, Jace 9000, & Jace 8000 with BACnet Secure Connect link layer!
- Protocol Revision 16 Certification 4.14.3.24.6
- Protocol Revision 18 Certification Testing in Progress for 4.15
- This is another example of Niagara modernizing while staying aligned with industry standards.



# niagara 5

## OVERVIEW



# Why a “**Revolution**”

- Niagara is entering its most significant architectural shift since AX to N4.
- The industry demands require more than incremental updates.
- Niagara 4.15 sets the stage.
- N5 is the inflection point.

# JAVA 25 | Revolution



NIAGARA  
SUMMIT  
2026

- Java 8 is over a decade old — no longer meets modern security or IT requirements
- Java 25 = Long-Term Support with modern TLS, crypto, and performance improvements
- Enables N5 features: new UI, themes, module recombination
- Better performance on JACE-9000 and Supervisor environments
- Cloud-ready runtime for future workflows (FoxC, RSM)

# Installer | Revolution

An MSI file contains all the instructions and data Windows needs to properly install an application. Think of it as a blueprint + container that tells Windows:

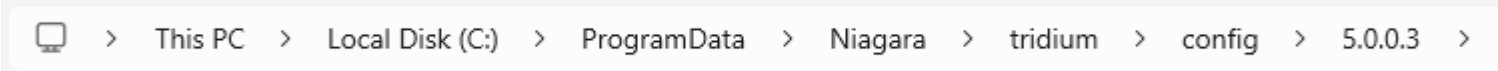
- What files to copy
- Where to place them
- What registry keys to create
- What shortcuts to add
- How to repair itself if something breaks
- How to uninstall cleanly
- It's powered by the Windows Installer Service

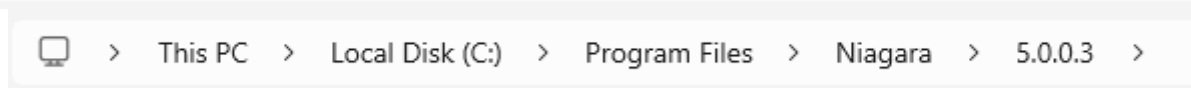


NIAGARA  
SUMMIT  
2026

# Modernized Installation Structure | Revolution

	N4	N5
Niagara System Home	C:\niagara\niagara-4.15.x.xx	C:\Program Files\Niagara\5.x <small>*read-only*</small>
Platform Daemon Home	C:\ProgramData\Niagara4.15\ <b>&lt;brand&gt;</b> \daemon	C:\ProgramData\Niagara\ <b>&lt;brand&gt;</b> \daemon\5.x
Niagara Config Home	N/A	C:\ProgramData\Niagara\ <b>&lt;brand&gt;</b> \config\5.x
Workbench User Home	C:\Users\ <b>&lt;user&gt;</b> \Niagara4.15\ <b>&lt;brand&gt;</b>	C:\Users\ <b>&lt;user&gt;</b> \niagara\ <b>&lt;brand&gt;</b> \5.x

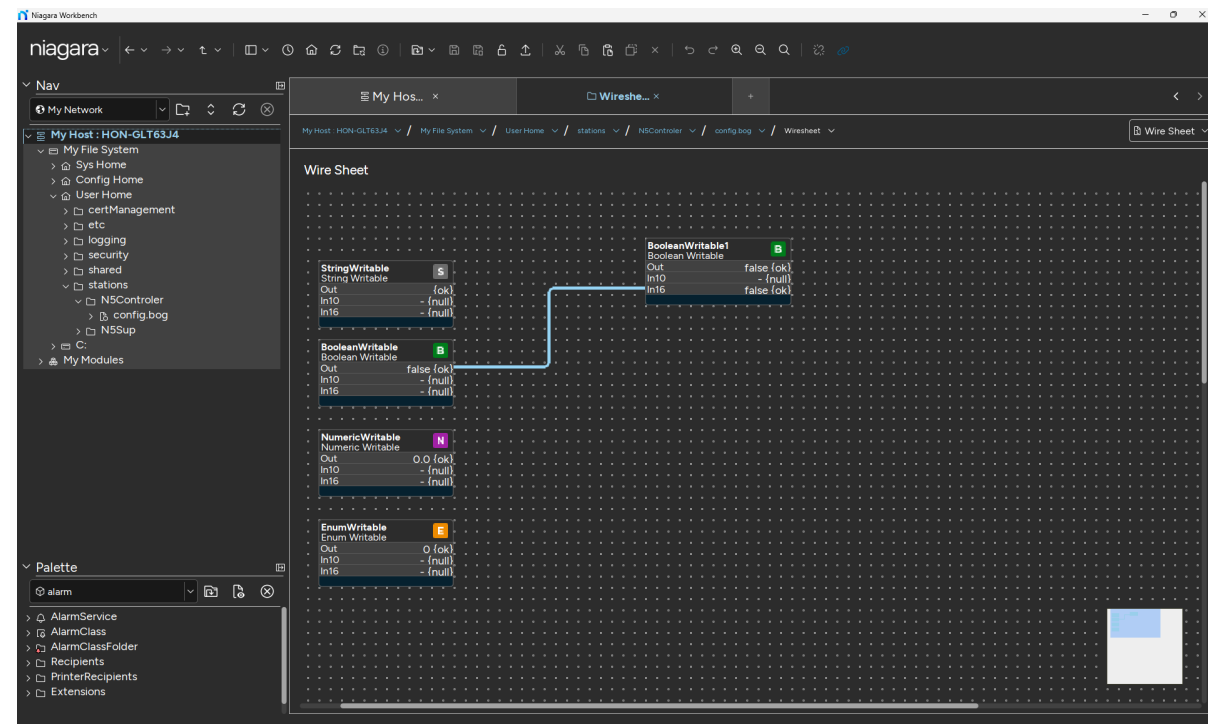
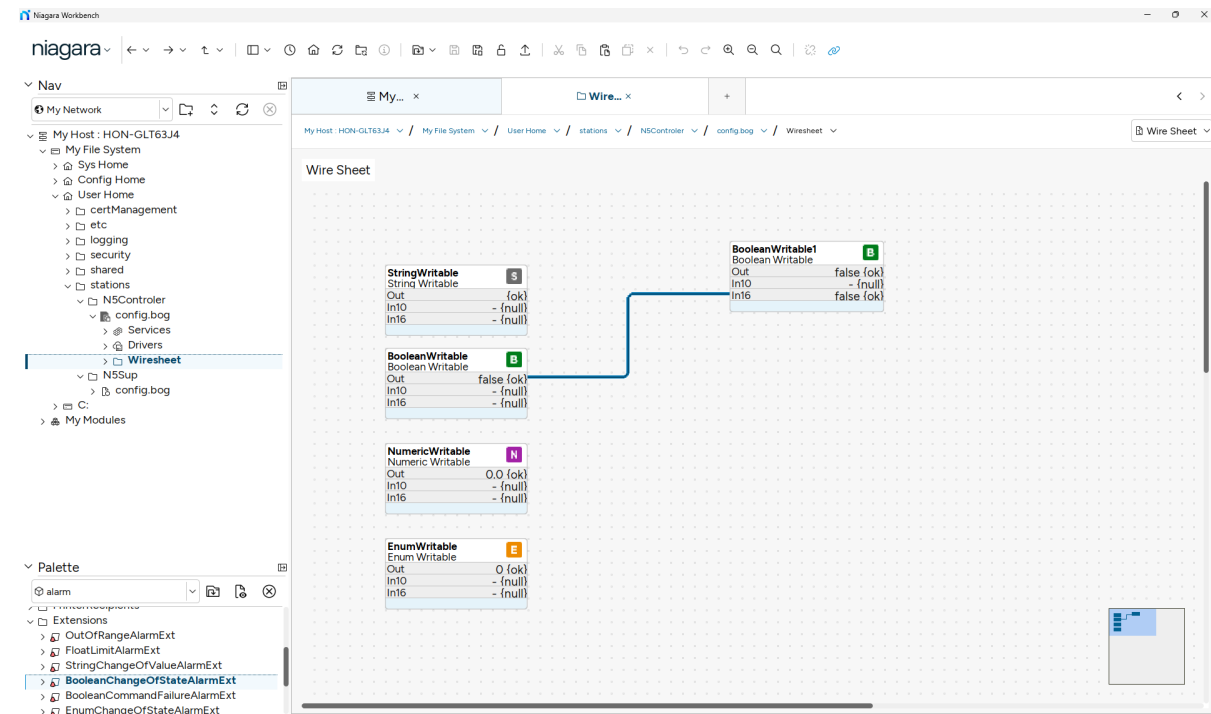

 > This PC > Local Disk (C:) > ProgramData > Niagara > tridium > config > 5.0.0.3 >


 > This PC > Local Disk (C:) > Program Files > Niagara > 5.0.0.3 >

# Interface | Revolution

Light Mode

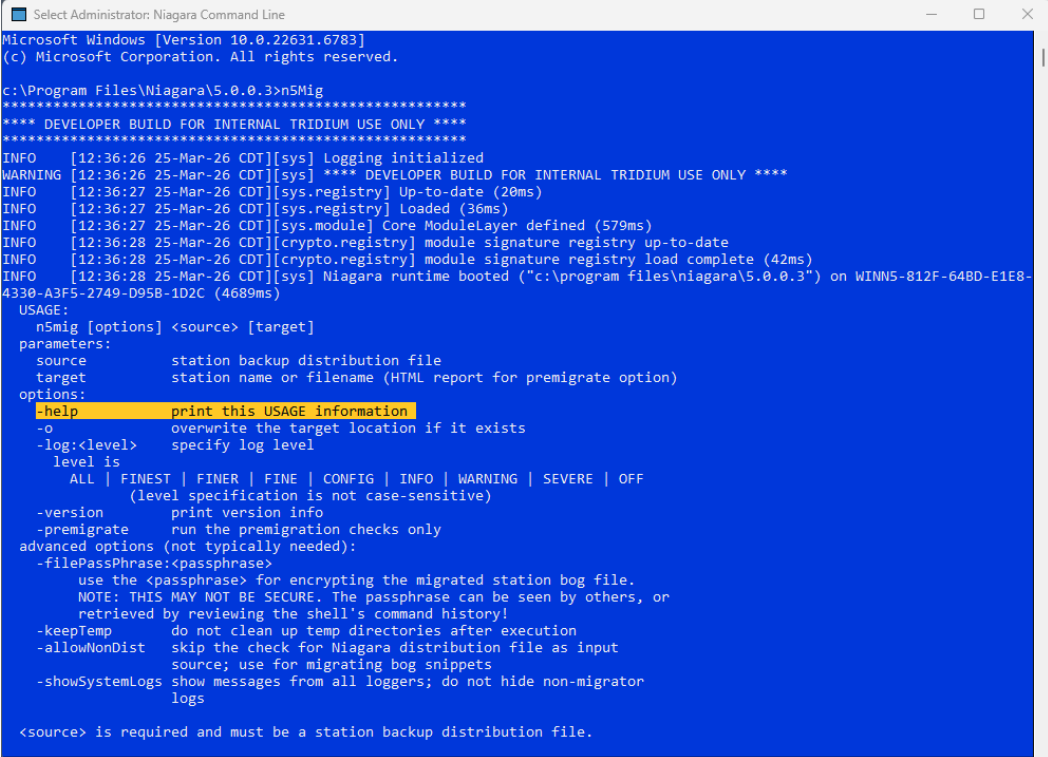
Dark Mode



# Migration | Revolution

## Preparing for Migration

- Upgrade station to 4.15.x.xx via Workbench
- Run N5 Migration Tool
  - Review Pre-migration report
  - Address Identified impacts
    - Modules
    - Program Objects
    - Legacy Graphics
    - Program Objects **\*MUST BE SIGNED\***
- Migrate Station
- Install on new host



```
Select Administrator: Niagara Command Line
Microsoft Windows [Version 10.0.22631.6783]
(c) Microsoft Corporation. All rights reserved.

c:\Program Files\Niagara\5.0.0.3>n5mig
*****
**** DEVELOPER BUILD FOR INTERNAL TRIDIUM USE ONLY ****
*****
INFO [12:36:26 25-Mar-26 CDT][sys] Logging initialized
WARNING [12:36:26 25-Mar-26 CDT][sys] **** DEVELOPER BUILD FOR INTERNAL TRIDIUM USE ONLY ****
INFO [12:36:27 25-Mar-26 CDT][sys.registry] Up-to-date (20ms)
INFO [12:36:27 25-Mar-26 CDT][sys.registry] Loaded (26ms)
INFO [12:36:27 25-Mar-26 CDT][sys.module] Core ModuleLayer defined (579ms)
INFO [12:36:28 25-Mar-26 CDT][crypto.registry] module signature registry up-to-date
INFO [12:36:28 25-Mar-26 CDT][crypto.registry] module signature registry load complete (42ms)
INFO [12:36:28 25-Mar-26 CDT][sys] Niagara runtime booted ("c:\program files\niagara\5.0.0.3") on WINNS-812F-64BD-E1E8-4330-A3F5-2749-D95B-1D2C (4689ms)

USAGE:
n5mig [options] <source> [target]
parameters:
source      station backup distribution file
target      station name or filename (HTML report for premigrate option)
options:
-help       print this USAGE information
-o          overwrite the target location if it exists
-log:<level> specify log level
            level is
            ALL | FINEST | FINER | FINE | CONFIG | INFO | WARNING | SEVERE | OFF
            (level specification is not case-sensitive)
-verbose    print version info
-premigrate run the premigration checks only
advanced options (not typically needed):
-filePassPhrase:<passphrase>
            use the <passphrase> for encrypting the migrated station bog file.
            NOTE: THIS MAY NOT BE SECURE. The passphrase can be seen by others, or
            retrieved by reviewing the shell's command history!
-keepTemp  do not clean up temp directories after execution
-allowNonDist skip the check for Niagara distribution file as input
            source; use for migrating bog snippets
-showSystemLogs show messages from all loggers; do not hide non-migrator
            logs

<source> is required and must be a station backup distribution file.
```

# Niagara Cloud & FoxC | Revolution

## **N4.15.4**

- Niagara Network | Station-to-Station Cloud Communication via FoxC

## **N5.0**

- Niagara Network | Station-to-Station Cloud Communication via FoxC
- Workbench to Niagara Remote Stations using Niagara Cloud Suite
- Workbench to Niagara Remote Platform using Niagara Cloud Suite

\*Niagara Remote Subscription & Active SMA required

# Niagara Cloud & Recover | Revolution

## N5.0

- Portfolio Manager
- Remote Software Management (RSM)
  - Software availability notifications
  - Version validation and compatibility checks
  - Controlled deployment workflows at scale

\*Niagara Recover Subscription & Active SMA required

# N5 Preview

Live Demo



"All demos are for informational purposes only."

# COMING IN 2026

## JANUARY



### DEVELOPER & OEM

Active members of the Developer Program will receive Developer Alpha software to transition Niagara modules to Niagara 5.

## JULY



### SYSTEM INTEGRATOR

Early Adopters have the option to participate in Early Access for bench testing and providing feedback on new features.

## SEPTEMBER



### BUILDING OWNER

Sign up through your System Integrator to have Niagara 5 installed in your building as part of the Beta program.

# One more Thing!

Live Demo



"All demos are for informational purposes only."



# Niagara Resource Center

Find answers to your technical questions and learn how to use our products

Filters ▾ Search Documentation i 🔍

## Information Categories



### Niagara

- [Niagara 5 - FAQ](#)
- [Getting Started with Niagara](#)
- [Installation Guide](#)
- [Containerized Niagara Guide](#)
- [Documentation Library](#)



### Features, Compatibility, and Releases

- [Niagara 4 Features Overview](#)
- [Niagara Compatibility Statement \(NiCS\)](#)
- [Niagara 4 Release Page](#)



### Niagara Security

- [Station Security Guide](#)
- [Niagara Hardening Guide](#)
- [Niagara 4 Security Page](#)



### Niagara Marketplace



### Mercomm and Legal



### Niagara Cloud

# Thank You!

